

# PIGMENTS, POWDERS, & FILLERS



2022 Product Brochure



sandream  
specialties

A VIVIFY COMPANY

# INSPIRATION DELIVERED

## ABOUT SANDREAM SPECIALTIES

Sandream Specialties is a global raw material supplier for the Cosmetics & Personal Care industry. With its expanded R&D and production sites, Sandream has enhanced its capacity for new color development, color matching, formulation, blending and dispersion services. We offer the most extensive range of innovative effect pigments and color ingredients, along with cosmetic actives, aesthetic modifiers, and visual delivery systems. We are the one-stop-shop solution provider for all your beauty needs.

Together with our affiliates and strategic partners in North America, Latin America, Europe and Asia, Sandream Specialties assures you:

- ☉ Best-in-class customer service
- ☉ Unique and novel ingredients with superior quality
- ☉ Custom sourcing and access to global resources
- ☉ Local inventory with prompt delivery and sampling
- ☉ Technical and Regulatory support and guidance

## OUR MISSION

We believe in social responsibility, transparency, attentiveness, reliability, and partnership. With our reputation for innovation and excellence, we inspire new ways to deliver beauty.

## QUALITY POLICY

Sandream Specialties is dedicated to providing top quality products and services to our customers. We are committed to satisfying industry and customer requirements and to the continuous improvement of our business, products, processes, and quality management system.



**sandream  
specialties**  
A VIVIFY COMPANY

☎ +1 973.882.3077

✉ [info@sandreamspecialties.com](mailto:info@sandreamspecialties.com)

🌐 [www.sandreamspecialties.com](http://www.sandreamspecialties.com)

# POWDERS AND FILLERS

Sandream Specialties is delighted to offer cosmetic chemists a full selection of powders designed to provide universal benefits. Our Powders can be used simply as fillers in cosmetic formulations, or to create unique sensory profiles with added benefits: coverage, slip, flow, oil absorption, low luster, soft focus and many more.

Our collection of mica and synthetic mica provide an invisible, soft elegant veil that fills out your formulation without distraction and adds a delightful soft texture to your formulation.

Our Soft Focus powders provide an elegant tool to hide imperfections while adding texture and softness.

Our Treated Micas also offer unique tactile feel in an almost invisible form that adds bulk and structure to your formulation.



# CONTENT

MICA BASED FILLERS	1
TREATED MICA POWDERS	1
CARMINE NATURAL COLOR LAKES	1
FLUORPHLOGOPITE FILLERS AND TREATED FLUORPHLOGOPITE	2
TALC POWDERS AND TREATED TALC	2
BORON NITRIDE POWDER AND TREATED BORON NITRIDE	2
SILICA POWDER AND TREATED SILICA	2
TREATED TITANIUM DIOXIDE AND IRON OXIDES	2
SOFT FOCUS POWDERS AND PEARLS	3
OLIVSPERSE PIGMENT DISPERSIONS	6
NATURAL COLORANTS	8
ORGANIC PIGMENTS	9
USAGE GUIDE	10

## MICA BASED FILLERS

Product	Code	INCI	Particle Size
Sericite	AH8310	Mica	<15 µm
Sericite	AH8325	Mica	3 - 25 µm
Sericite	TF108	Mica	
Impact Velvet	MWV-110J	Mica	0 - 15 µm
Impact Matte Mica T	B1250W	Mica	1 - 20 µm
Impact Satin Mica	U0626	Mica	6 - 26 µm
SDI Sericite White	SDI-SW	Mica	1 - 30 µm
SDI Matte White Mica	SDI-MW	Mica, TiO <sub>2</sub>	1 - 30 µm
SDI Matte Yellow Mica	SDI-MY	Mica, Iron Oxides	1 - 30 µm
SDI Matte Red Mica	SDI-MR	Mica, Iron Oxides	1 - 30 µm
SDI Matte Black Mica	SDI-MB	Mica, Iron Oxides	1 - 30 µm

## TREATED MICA POWDERS

Product	Code	INCI	Particle Size
Sericite AV	PFS-AV	Mica, Aloe Barbadensis Leaf Extract	6 µm
SanMica AV	PFM-AV	Mica, Aloe Barbadensis Leaf Extract	8 µm
Impact Mica LL3	M-LL3	Mica, Lauroyl Lysine	< 15 µm
Mica	HL	Mica, Hydrogenated Lecithin	5 - 25 µm
SanMica 713 AS	PFM-713	Mica, Triethoxycaprylsilane	7 - 13 µm

## CARMINE NATURAL COLOR

\*Other colors are available upon request

Product	Code	Remark
Carmine Lake Brilliant 52%	Brilliant Red	Insoluble in water. Soluble in strong acid and alkali
Carmine Red Q 50%	Brilliant Red	Insoluble in water. Soluble in strong acid and alkali
Carmine Red Yellow 50%	Red-Yellow	Insoluble in water. Soluble in strong acid and alkali
Carmine Violet 50%	Purple	Insoluble in water. Soluble in strong acid and alkali
Carmine WS Y 50%	Dark Brown	Soluble in water

## FLUORPHLOGOPITE FILLERS AND TREATED FLUORPHLOGOPITE

Product	Code	INCI	Particle Size
SanMica	F15	Synthetic Fluorophlogopite	<15 µm
SanMica	F525E	Synthetic Fluorophlogopite	5 – 25 µm
SanMica	F1060	Synthetic Fluorophlogopite	10 – 60 µm
SanMica	F50250	Synthetic Fluorophlogopite	50 – 250 µm
SanMica	F200700	Synthetic Fluorophlogopite	200 – 700 µm
Fiesta SynPearl Mica	FL-SPL	Synthetic Fluorophlogopite	10 – 45 µm
SanMica	DM10	Fluorophlogopite, Dimethicone	<10 µm
SanMica	DM1060	Fluorophlogopite, Dimethicone	10 – 60 µm

## BORON NITRIDE POWDER AND TREATED BORON NITRIDE

Product	Code	INCI	Particle Size
SanBornit 408	PFB-408	Boron Nitride	4 – 8 µm
SanBornit 1014	PFB-1014	Boron Nitride, Dimethicone	10 – 14 µm

## SILICA POWDER AND TREATED SILICA

Product	Code	INCI	Particle Size
SanSilica 307	PFS-307	Silica	3 – 7 µm
SanSilica 610 AS	PFS-610	Silica, Triethoxycaprylylsilane	6 – 10 µm

## TALC POWDER AND TREATED TALC

Product	Code	INCI	Particle Size
SanTalc 511	PFT-511	Talc	5 – 11 µm
SanTalc 13AS	PFT-13	Talc, Triethoxycaprylylsilane	5 – 10 µm
SanTalc AV	PFT-AV	Talc, Aloe Barbadensis Leaf Extract	10 µm
Talc	MM3D1	Talc, Magnesium Myristate, Dimethicone	<15 µm

## TREATED TITANIUM DIOXIDE AND IRON OXIDES

Product	Code	INCI	Particle Size
SDI TiO2 AS	PFD-TAS	Titanium Dioxide, Triethoxycaprylylsilane	<1.0 µm
SDI Black IO AS	PFI-BAS	Iron Oxides, Triethoxycaprylylsilane	<1.5 µm
SDI Red IO AS	PFI-RAS	Iron Oxides, Triethoxycaprylylsilane	<1.5 µm
SDI Yellow IO AS	PFI-YAS	Iron Oxides, Triethoxycaprylylsilane	<1.5 µm

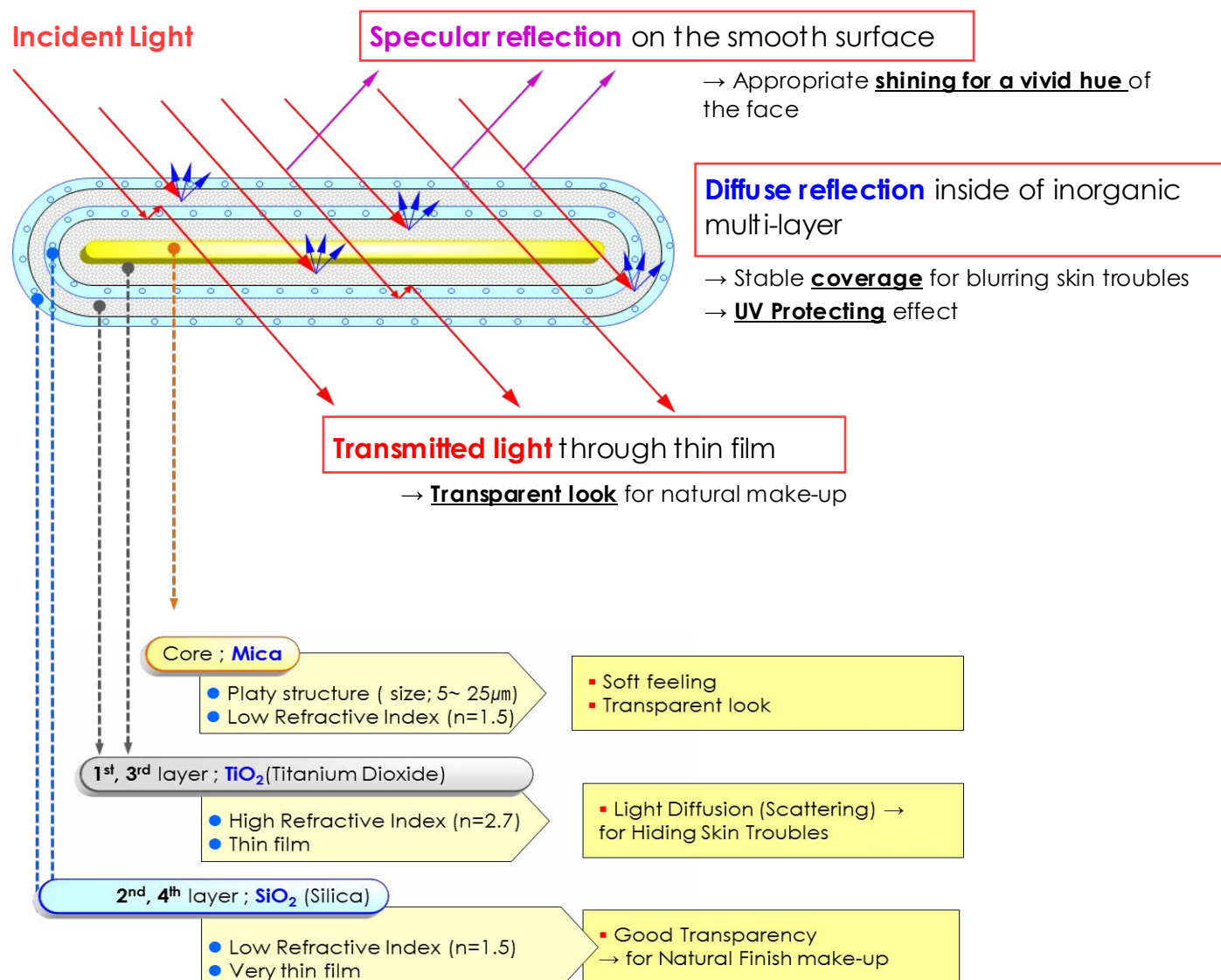
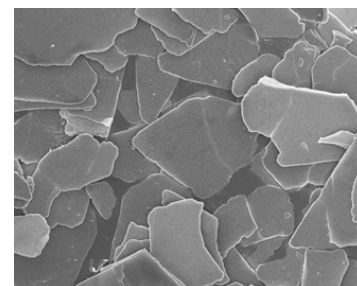


# SOFT FOCUS POWDERS AND PEARLS

Product	Code	INCI	Particle Size
SD Soft Cover Powder	SF515	Mica, MgO	5 - 15 $\mu\text{m}$
SD Soft White	SN100	Mica, TiO <sub>2</sub> , SiO <sub>2</sub> , SnO <sub>2</sub>	10 - 60 $\mu\text{m}$
SD Soft Gold	SL100	Mica, TiO <sub>2</sub> , SiO <sub>2</sub> , SnO <sub>2</sub>	10 - 60 $\mu\text{m}$
SD Soft Red	SL200	Mica, TiO <sub>2</sub> , SiO <sub>2</sub> , SnO <sub>2</sub>	10 - 60 $\mu\text{m}$
SD Soft Violet	SL300	Mica, TiO <sub>2</sub> , SiO <sub>2</sub> , SnO <sub>2</sub>	10 - 60 $\mu\text{m}$
SD Soft Blue	SL400	Mica, TiO <sub>2</sub> , SiO <sub>2</sub> , SnO <sub>2</sub>	10 - 60 $\mu\text{m}$
SD Soft Green	SL500	Mica, TiO <sub>2</sub> , SiO <sub>2</sub> , SnO <sub>2</sub>	10 - 60 $\mu\text{m}$

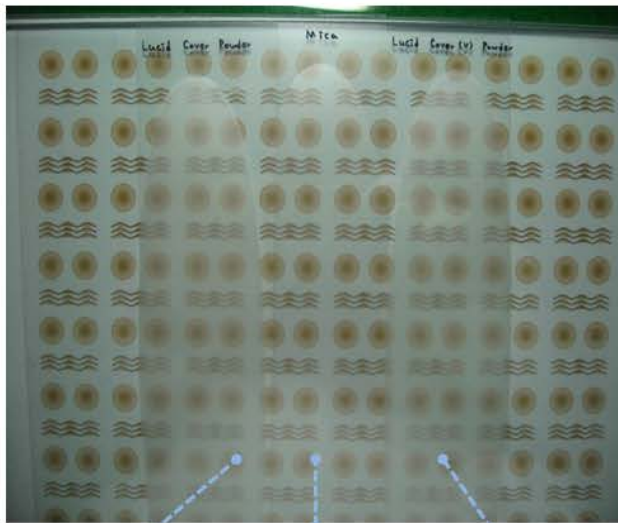
## The Structure & Mechanism of Soft Focus Effect Powders

- ◆ **Smooth Surface** by regular coating process
- ◆ **Optimum Thickness** of the coated layer
- ◆ The **alternately coated multi-layer** of inorganics having High & Low refractive index

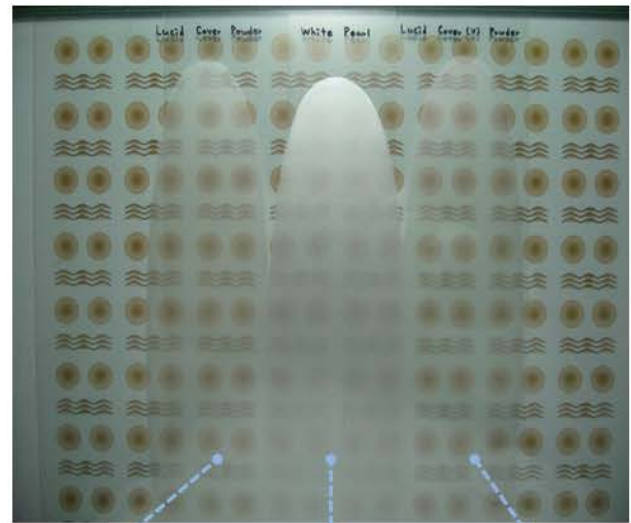


## Transmittance Test Results

- Method : Draw down test on the surface of glass(5mm)
- Sample : 6wt% of powder in Nitrocellulose lacquer
- Film thickness : 100 $\mu$ m



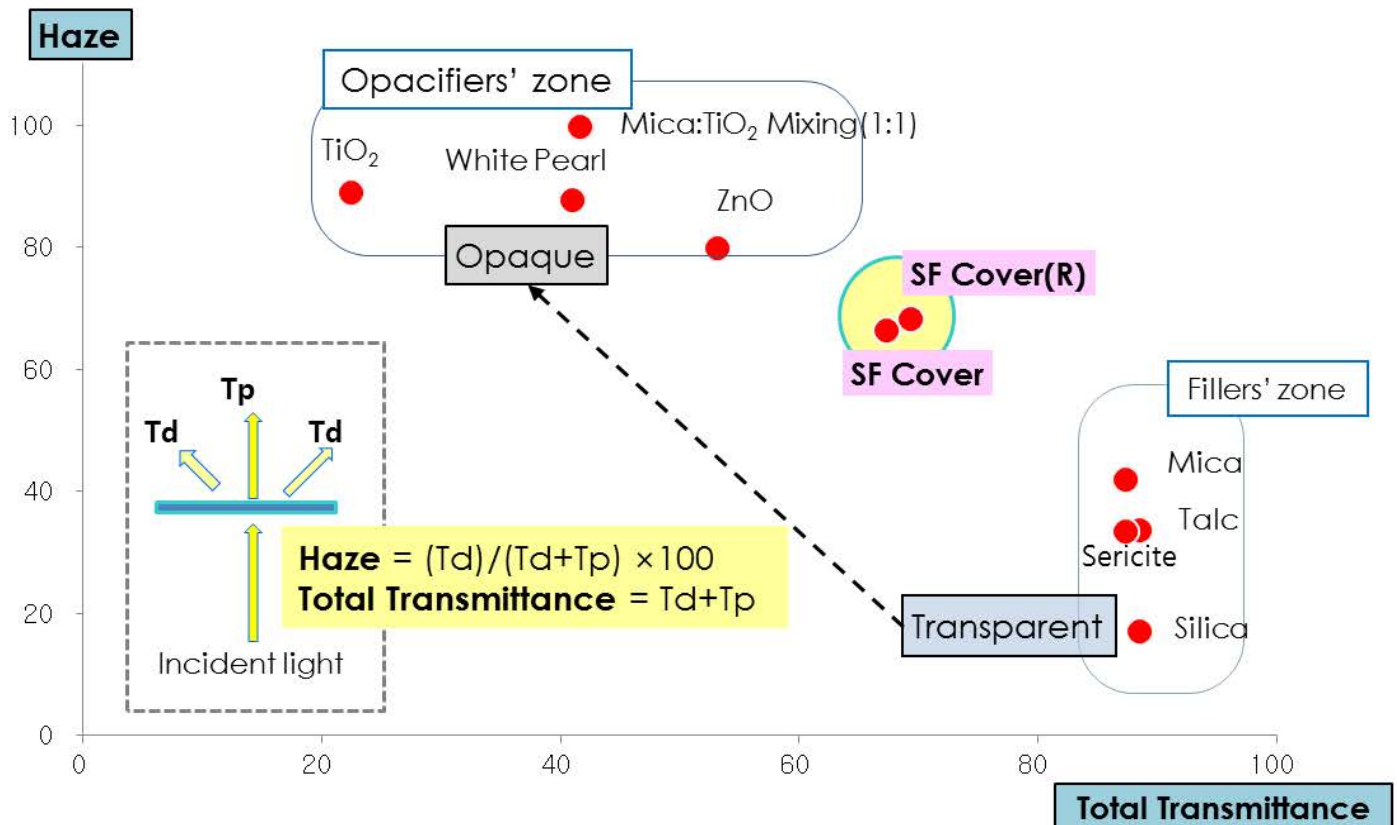
SF Cover (TiO<sub>2</sub>: 52wt%) Natural Mica SF Cover (R) (TiO<sub>2</sub>: 56wt%)



SF Cover (TiO<sub>2</sub>: 52wt%) White Pearl (TiO<sub>2</sub>: 40wt%) SF Cover (R) (TiO<sub>2</sub>: 56wt%)

## Haze & Total Transmittance Test Results

- Method : Draw down test on the transparent film
- Sample : 6wt% of powder in Nitrocellulose lacquer
- Film thickness : 100 $\mu$ m
- Measuring instrument : Haze analyzer





## OLIVSPERSE – NATURAL ESTER DISPERSED PIGMENTS

Olivisperse™ pigment dispersions are comprised of a naturally derived ester and a variety of inorganic pigments. Each shade is highly pigmented with up to 75% colorant for maximum coverage. The smooth paste is compatible with natural oils and many commonly used cosmetic ingredients. Olivisperse is more stable, eco-friendly, and easier to incorporate into formulations compared to silicone pigment dispersions. The Olivisperse line is an excellent naturally dispersed pigment solution contributing to uniform color laydown in foundations, BB creams, concealers, lipsticks, and many other makeup applications.

Our natural dispersant is a specialty ester (INCI name: Octyldodecyl Oleate), which is derived from Olive Oil, and is ideal for dispersing pigments in color applications. The initial spread is light and fast-absorbing, with a smooth after-feel on the skin. It also provides excellent lubricating properties without imparting a heavy, greasy feel.

### Key Performance Benefits

- Naturally based ester, derived from olive oil
- Absorbs quickly into skin leaving uniform color coverage
- Soft, non-greasy spread profile
  - ideal to replace volatile silicones
- Contains high load pigments
- Excellent flow and stability to minimize cracking on the skin

### Recommended Applications

- Foundations
- BB Creams
- Sun Care and Skin Care
- Lip sticks, eye shadows and other makeups



INTRODUCING :

## SANDREAM SPECIALTIES COLOR STUDIO

We are proud to present an innovative online tool which may be utilized by customers to streamline pigment choices from our extensive portfolio by application and desired effect. This feature displays outstanding visuals of our stunning pearlescent pigments enabling the user to make effective choices while providing an abundance of valuable information.

[WWW.SDICOLORSTUDIO.COM](http://WWW.SDICOLORSTUDIO.COM)

# OLIVSPERSE PIGMENT DISPERSIONS



Olivisperse Black IO



Olivisperse Brown IO



Olivisperse Red IO



Olivisperse Yellow IO



Olivisperse White



Olivisperse Tan

Product	Code	Color	Composition	Pigment Load
- Finely Milled Pigment Dispersion in Natural Octyldodecyl Olivat for a Variety of Cosmetic Applications				
Olivisperse Black IO*	BIO-33133	Black	Octyldodecyl Oleate, Black Iron Oxide	62.0 - 67.0%
Olivisperse Brown IO*	BrIO-33115	Brown	Octyldodecyl Oleate, Brown Iron Oxide	50.0 - 55.0%
Olivisperse Red IO*	RIO-338075	Red	Octyldodecyl Oleate, Red Iron Oxide	42.0 - 47.0%
Olivisperse Yellow IO*	YIO-33032	Yellow	Octyldodecyl Oleate, Yellow Iron Oxide	42.0 - 50.0%
Olivisperse White*	W-47051	White	Octyldodecyl Oleate, Titanium Dioxide	52.0 - 60.0%
Olivisperse Tan	T-35132	Tan	Octyldodecyl Oleate, TiO <sub>2</sub> , Iron Oxides	40.0 - 60.0%

\*Regularly Stocked in NJ USA

# NOO CRYSTAL

## ECOCERT-CERTIFIED DISPERSER/EMOLLIENT/SHINE

With up to 1 % vitamin E acetate, Sandream Specialties NOO Crystal has various benefits from anti-aging to sun protection. In addition, NOO Crystal is customized to deliver a fast absorbing spread profile while providing the formulation with non-greasy and cushiony after-feel. It is ideal for color cosmetic, skin, hair, and body care application.

### INCI Name

Octyldodecyl Oleate and Tocopheryl Acetate

### Odor

Odorless

### Applications

Color Cosmetics, Facial Care, Hair Care, Body Care, Sun Care.

### Formulation/Processing Guidelines

Disperse in oil phase. Compatible with other esters, silicones, nonpolar oils.

### Properties

- Contribute to Anti-Aging Properties
- Contribute to Sun Protection
- Help to Increase Moisturization
- Non-Greasy and Cushiony after-feel
- Adds tremendous shine to hair and body.
- Adds lubricity to loose and press powder for a luxe-feel.
- Natural Attributes Derived from Olive
- Can be used for cleansing oil for facial care.
- Can be used for natural high shine lip gloss.

### Recommended Usage Levels

5-40% for all applications listed above

### Legislations

Global Compliance: US, Europe, Japan, and China.

### Appearance

Clear Liquid



# NATURAL COLORANTS

The use of green and sustainable colorants is becoming more popular in the personal care market. Sandream Impact is now offering a range of vibrant and functional pigments derived from nature for your formulation needs. Bold yellow and orange hues are represented by Annatto and Turmeric which are high in carotenoids and full of antioxidants.

Beautiful purple pink reds are delivered by our new Red Cabbage, Red Radish and Purple Carrot colorants and previously launched CD Purple Sweet Potato and Elderberry Red Powders which fall into the anthocyanin category. These vegetables contain a significant concentration of antioxidants, may have anti-inflammatory benefits, and provide some natural protection against the harmful rays of the sun.

Alfalfa, Caramel and Annatto colorants are stable across the widest pH range enabling utilization within a diverse group of applications. We are excited to present our new natural colorant collection which consists of both oil dispersible and water soluble options.

## Applications

- Lip balm, lip gloss, lipstick palette
- Cheek tint, creams, lotions,
- Body oils, bath washes, bath bombs,
- Nail care, nail polish

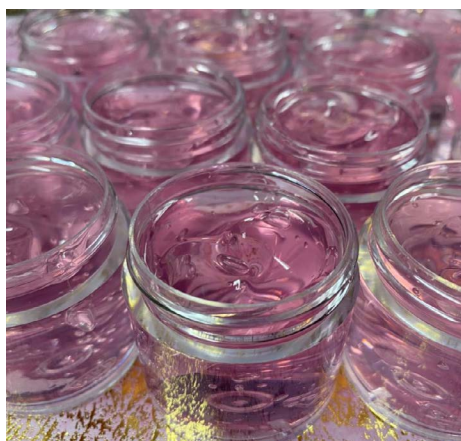
## Recommended Usage Levels

0.05 – 15%. Water Soluble Natural Colorants are very strong, so a low concentration can be utilized. Oil dispersible Natural Colorants provide vivid mass tones at low concentrations, but increased percent used will create skin coverage.

Product	Code	Color	INCI	Solubility
CD Purple Sweet Potato Red Powder	CV5	Red/Pink	Ipomea Batatas Root Extract	Oil Dispersible
CD Elderberry Red Powder	CV10	Wine Red	Sambucus Nigra Fruit Extract	Oil Dispersible
SD Annatto Powder O	SDO-AO2251	Orange	Annatto	Oil Dispersible
SD Red Cabbage Powder O	SDO-RC1857	Brown	Anthocyanins	Oil Dispersible
SD Red Radish Powder O	RIO-338075	Red	Raphanus Sativus (Radish) Root Extract	Oil Dispersible
SD Turmeric Oleoresin Powder O	SDO TU1858	Yellow	Curcuma Longa (Turmeric) Root Extract	Oil Dispersible
SD Alfalfa Extract Powder W	W-47051	Green	Medicago Sativa (Alfalfa) Extract	Water Soluble
SD Annatto Powder W	SDW-AE1160	Orange	Annatto	Water Soluble
SD Caramel Powder W	SDW-CP2260	Brown	Caramel	Water Soluble
SD Purple Carrot Powder W	SDW-PC2425	Red/Purple	Daucus Carota Sativa (Carrot) Root Extract	Water Soluble



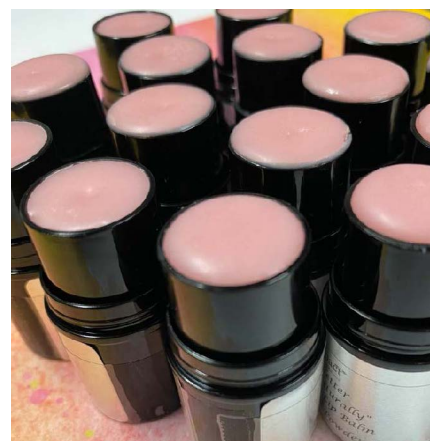
## Multiple Applications



**.03% SD Purple Carrot Powder W**  
Antioxidant and Moisture Surge Serum  
Formula 214-81



**.03% SD Caramel Powder W**  
Brightening and Hydrating Face Cream  
Formula 214-82



**.14% SD Red Radish Powder O**  
Moisturizing Therapy Lip Balm  
Formula 214-79

## ORGANIC PIGMENTS

Product	CI #	Chemical Name
SDI Red 40 R4040C	CI 16035	FD&C Red 40 Lake
SDI Yellow 5 Y5157C	CI 19140	FD&C Yellow 5 Lake
SDI Yellow 6 Y6354C	CI 15986	FD&C Yellow 6 Lake
SDI Blue 1 B1113C	CI 42090	FD&C Blue 1 Lake

\*Other colors are available upon request



# USAGE GUIDE

Approved for use in

■ Americas ▲ EU ● Asia

Conditionally approved in selected countries

■ Americas ▲ EU ● Asia

Not approved for use in

■ Americas ▲ EU ● Asia

Category	Product Name	Code	Eye			Lip			Face			Nail			Personal Care		
Mica Based Fillers	Please refer to page 1 for a full list of pearl pigments		■	▲	●	■	▲	●	■	▲	●	■	▲	●	■	▲	●
Treated Mica Powders	Please refer to page 1 for a full list of pearl pigments		■	▲	●	■	▲	●	■	▲	●	■	▲	●	■	▲	●
Carmines Natural Color Lakes	Please refer to page 1 for a full list of pearl pigments		■	▲	●	■	▲	●	■	▲	●	■	▲	●	■	▲	●
Synthetic Fluorophlogopite and Treated Based Fillers	Please refer to page 2 for a full list of pearl pigments		■	▲	●	■	▲	●	■	▲	●	■	▲	●	■	▲	●
Talc and Treated Talc Powders	Please refer to page 2 for a full list of pearl pigments		■	▲	●	■	▲	●	■	▲	●	■	▲	●	■	▲	●
Boron Nitride and Treated Boron Nitride Fillers	Please refer to page 2 for a full list of pearl pigments		■	▲	●	■	▲	●	■	▲	●	■	▲	●	■	▲	●
Silica and Treated Silica Fillers	Please refer to page 2 for a full list of pearl pigments		■	▲	●	■	▲	●	■	▲	●	■	▲	●	■	▲	●
Treated Titanium Dioxide & Iron Oxides	Please refer to page 2 for a full list of pearl pigments		■	▲	●	■	▲	●	■	▲	●	■	▲	●	■	▲	●
Soft Focus Powders and Pearls	Please refer to page 3 for a full list of pearl pigments		■	▲	●	■	▲	●	■	▲	●	■	▲	●	■	▲	●
Olivisperse	Olivisperse Black IO	BIO-33133	■	▲	●	■	▲	●	■	▲	●	■	▲	●	■	▲	●
	Olivisperse Brown IO	BrIO-33115	■	▲	●	■	▲	●	■	▲	●	■	▲	●	■	▲	●
	Olivisperse Red IO	RIO-338075	■	▲	●	■	▲	●	■	▲	●	■	▲	●	■	▲	●
	Olivisperse Yellow IO	YIO-33032	■	▲	●	■	▲	●	■	▲	●	■	▲	●	■	▲	●
	Olivisperse White	W-47051	■	▲	●	■	▲	●	■	▲	●	■	▲	●	■	▲	●
	Olivisperse Tan	T-35132	■	▲	●	■	▲	●	■	▲	●	■	▲	●	■	▲	●
Natural Octyldodecyl Oliviate	Please refer to page 7 for Details		■	▲	●	■	▲	●	■	▲	●	■	▲	●	■	▲	●
Natural Colorants	Please refer to page 8 for Details		Please contact <a href="mailto:lab@sandreamspecialties.com">lab@sandreamspecialties.com</a> for usage details														
Organic Pigments	Please refer to page 9 for Details		Please contact <a href="mailto:lab@sandreamspecialties.com">lab@sandreamspecialties.com</a> for usage details														

Usage Guide Statement: The information included in this usage guide is given in good faith and represents our best present state of knowledge but is offered without any guarantee or warranty. It is your responsibility to confirm this information with your regulatory department. \*There are no particle size limitations when using Synthetic Mica based pigments.

# SANDREAM SPECIALTIES – COMPLETE PRODUCT PORTFOLIO

Color Effect	White/Silver	Interference	Color	Color Travel	Dispersion
Mica Based Pearl Series					
Chromatique	V		V		
DP/TC	V	V	V		
Eldorado			V		
Gemini				V	
Impact	V				
Majestic			V		
Marvel		V	V		
MicaMira					
Midnight			V		
Mystic			V		
Optique		V			
Glass Based Pearl Series					
Diamond	V	V	V	V	
Glamour	V	V	V		
GlassMira				V	
Synthetic Fluorophlogopite Based Series					
Fiesta	V	V	V	V	
Sachet	V	V	V		
Smokey			V		
SynMira				V	
Aluminum Based Series					
Alchemique	V		V		
SDI Duo			V		
Silver Coated Glass					
Sterling	V				
Silica Color Variable					
SilikMira				V	
SG Series					
SG Black Diamond	V				
Magni Series					
Magni-Pearl	V				
Illumina Series					
Illumina			V		
Glitters & Holographic Series					
Spectra	V		V	V	
Confetti	V		V		
Laser Effect Color Variable					
Fantasy	V		V	V	
Bismuth Oxychloride					
Biluna	V				
Bichroma			V		
Powders and Fillers					
Powders and Fillers	V		V		
Naturally Dispersed Pigment Series					
Olivperse					V
Other Pigments					
Carmine			V		
Natural Colorants	V				
Pigments and Lakes	V				
Thermochromatic				V	
Photochromatic				V	
Glow in the Dark			V		
Dream Fx Visual Delivery Systems					

Disclaimer: The information described above is offered solely for the User's consideration, investigation and independent verification. It is up to the User to decide whether or how to use this information. Sandream Specialties makes no warranty about the accuracy or completeness of the information contained herein or the suitability of any of their products for the User's specific intended use. Furthermore, all express or implied warranties of noninfringement, merchantability or fitness for a particular purpose are hereby disclaimed. Sandream Specialties assumes no responsibility for any liability or damages arising out of or relating to the foregoing.

February 2022



373 RT. 46 W, Building E  
Fairfield, NJ  
07004, U.S.A.

O +1 973.882.3077  
F +1 973.882.3088

[www.sandreamspecialties.com](http://www.sandreamspecialties.com)  
[info@sandreamspecialties.com](mailto:info@sandreamspecialties.com)



Scan QR code to  
visit our website for more  
product information & TDS