

MICA PEARLESCENT PIGMENT



2022 Product Brochure



sandream
specialties
A VIVIFY COMPANY

INSPIRATION DELIVERED

ABOUT SANDREAM SPECIALTIES

Sandream Specialties is a global raw material supplier for the Cosmetics & Personal Care industry. With its expanded R&D and production sites, Sandream has enhanced its capacity for new color development, color matching, formulation, blending and dispersion services. We offer the most extensive range of innovative effect pigments and color ingredients, along with cosmetic actives, aesthetic modifiers, and visual delivery systems. We are the one-stop-shop solution provider for all your beauty needs.

Together with our affiliates and strategic partners in North America, Latin America, Europe and Asia, Sandream Specialties assures you:

- Ⓞ Best-in-class customer service
- Ⓞ Unique and novel ingredients with superior quality
- Ⓞ Custom sourcing and access to global resources
- Ⓞ Local inventory with prompt delivery and sampling
- Ⓞ Technical and Regulatory support and guidance

OUR MISSION

We believe in social responsibility, transparency, attentiveness, reliability, and partnership. With our reputation for innovation and excellence, we inspire new ways to deliver beauty.

QUALITY POLICY

Sandream Specialties is dedicated to providing top quality products and services to our customers. We are committed to satisfying industry and customer requirements and to the continuous improvement of our business, products, processes, and quality management system.



**sandream
specialties**
A VIVIFY COMPANY

☎ +1 973.882.3077
✉ info@sandreamspecialties.com
🌐 www.sandreamspecialties.com



NATURAL MICA PIGMENTS

Pearlescent pigments are widely used in the cosmetic industry to add luster, sparkle, impart color or color-travel effects, and provide coverage. Pearls are used in many cosmetics applications including nail polish, eye shadow, lipstick and blush.

There are several types of cosmetic pearls available based on different substrates such as natural mica, guanine, bismuth oxychloride, synthetic mica (fluorophlogopite) and calcium aluminum silicate. Each substrate offers its own unique qualities and benefits.

Cosmetic micas are potassium aluminum silicate dihydrate. Silicates, much like silica, are based on interconnected SiO_4 tetrahedra. However, in silicates the ratio of Si to O is greater, forming silicone-oxygen anions. To form neutral solid silicates, cations like potassium are needed to balance the negative charge. Micas are subject to size restrictions; particles when used around the eyes and not to exceed 150 microns.



CONTENT

WHITE/SILVER PIGMENTS	1
INTERFERENCE PIGMENTS	3
GOLD PIGMENTS	5
METALLIC PIGMENTS	6
RED/PINK PIGMENTS	7
BLUE PIGMENTS	8
GREEN PIGMENTS	8
BLACK/GREY PIGMENTS	8
YELLOW/ORANGE PIGMENTS	9
PURPLE/VIOLET PIGMENTS	9
COLOR VARIABLE PIGMENTS	10
USAGE GUIDE	13

WHITE/SILVER PIGMENTS



Impact Silver Satin
<15 µm



Impact Velvet
<15 µm



Impact Silver Fine
5 - 30 µm



Impact Silver
10 - 60 µm



Impact Silver Rutile
10 - 60 µm



Impact Bright Silver
30 - 70 µm



Impact Starlight Pearl
6 - 85 µm



Impact Glitter Pearl
20 - 100 µm



Impact Sparkle
20 - 150 µm



Impact Silver Sparkle
40 - 200 µm

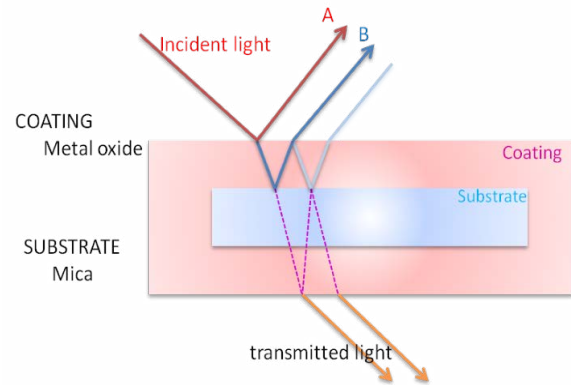
Product	Code	INCI	Particle Size
Impact Silver Satin	MWV-111R	Mica, TiO ₂ , SnO ₂	< 15 µm
Impact Velvet	MWV-110J	Mica, TiO ₂	< 15 µm
TC Silk Satin	W8105	Mica, TiO ₂	2 - 18 µm
Impact Silver Fine	MWF-123	Mica, TiO ₂ , SnO ₂	5 - 30 µm
DP Silver White	M1041	Mica, TiO ₂	6 - 48 µm
TC Bright Silver	X2103	Mica, TiO ₂ , SnO ₂	10 - 60 µm
Majestic Coconut	MCM-WT4	Mica, TiO ₂	10 - 60 µm
Impact Silver	MWM-100	Mica, TiO ₂	10 - 60 µm
Impact Silver Rutile	MWM-103	Mica, TiO ₂ , SnO ₂	10 - 60 µm
Impact Bright Silver	MWM-101	Mica, TiO ₂	30 - 70 µm
Impact Starlight Pearl	MWM-110	Mica, TiO ₂	6 - 85 µm
Impact Glitter Pearl	MWL-153	Mica, TiO ₂ , SnO ₂	20 - 100 µm
Impact Sparkle	MWL-150	Mica, TiO ₂	20 - 150 µm
Impact Silver Sparkle	MWL-163	Mica, TiO ₂	40 - 200 µm

*The pictures above are a representative selection of our pearl pigments. The additional products listed in the table differ primarily in particle size, where a wide selection of images would be redundant. The basic color appearance will remain consistent across the particle size spectra.

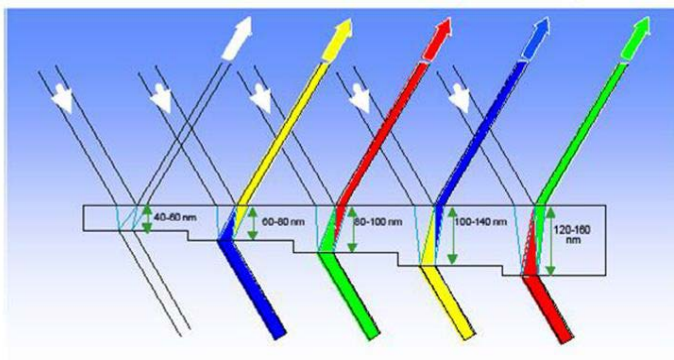
Pearlescent Pigments - Technical Overview

Two parameters are critical to the pigment's appearance:

- Metal oxide layer thickness
 - Smaller are more satiny & opaque
 - Larger are more sparkly & transparent
- Lateral size of particle

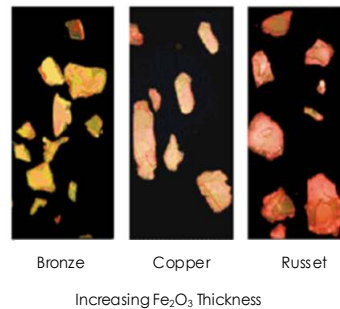
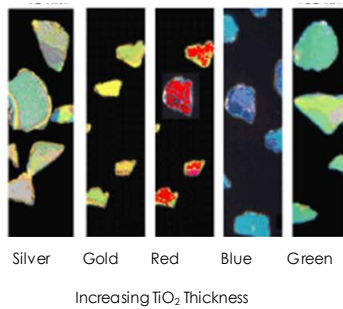


Metal Oxide Layer Thickness

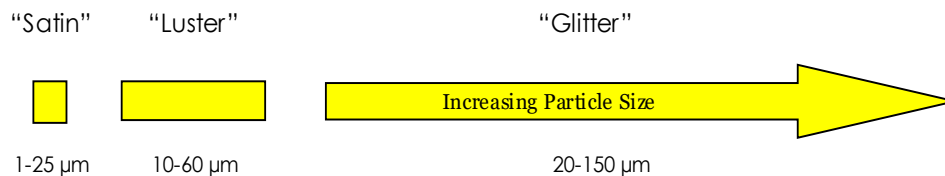


Thickness of the metal oxide layer determines the (reflected) interference color.

* Note that the complementary color is transmitted



Particle Size Effect



Characteristics

- Semi-transparent
- Colors based on combination of light interference and absorption color of metal oxide layer
- Multiple surfaces of reflection give "pearl luster" finish

INTERFERENCE PIGMENTS

Mica Interference Pigments are used to create lustrous or opalescent effects in all types of cosmetics and personal care products. The iridescent pigments use thin, precisely controlled coatings of titanium dioxide on mica platelets to separate white light into its component parts and produce dual colors, one by reflection and one by transmission, which then appear as iridescent luminosity.



Optique Satin Blue
5 - 25 µm



Optique Satin Gold
5 - 25 µm



Optique Satin Green
5 - 25 µm



Optique Satin Red
5 - 25 µm



Optique Satin Violet
5 - 25 µm



Optique Shimmer Blue
10 - 100 µm



Optique Shimmer Gold
10 - 100 µm



Optique Shimmer Red
10 - 100 µm



Optique Shimmer Violet
10 - 100 µm



Optique Sparkle Orange
10 - 150 µm

Product	Code	INCI	Particle Size
Optique Satin Blue	MIF-221	Mica, TiO ₂ , SnO ₂	5 - 25 µm
Optique Satin Gold	MIF-201	Mica, TiO ₂ , SnO ₂	5 - 25 µm
Optique Satin Green	MIF-231	Mica, TiO ₂ , SnO ₂	5 - 25 µm
Optique Satin Red	MIF-211	Mica, TiO ₂ , SnO ₂	5 - 25 µm
Optique Satin Violet	MIF-223	Mica, TiO ₂ , SnO ₂	5 - 25 µm
Optique DP Gold	MIM-FLGld	Mica, TiO ₂	6 - 48 µm
Optique DP Green	MIM-FLGr	Mica, TiO ₂	6 - 48 µm
Optique DP Red	MIM-FLR	Mica, TiO ₂	6 - 48 µm
Optique DP Super Blue	MIM-FLSB	Mica, TiO ₂ , SnO ₂	6 - 48 µm
Optique DP Super Gold	MIM-FLSGld	Mica, TiO ₂ , SnO ₂	6 - 48 µm
Optique DP Violet	MIM-FLV	Mica, TiO ₂	6 - 48 µm
Optique DP Super Red	MIM-FLSR	Mica, TiO ₂ , SnO ₂	10 - 60 µm
Optique DP Super Violet	MIM-FLSV	Mica, TiO ₂ , SnO ₂	10 - 60 µm
Optique Pearl Blue	MIM-225	Mica, TiO ₂ , SnO ₂	10 - 60 µm
Optique Pearl Copper	MIM-217	Mica, TiO ₂ , SnO ₂	10 - 60 µm
Optique Pearl Gold	MIM-205 AR	Mica, TiO ₂ , SnO ₂	10 - 60 µm
Optique Pearl Green	MIM-235	Mica, TiO ₂ , SnO ₂	10 - 60 µm
Optique Pearl Red	MIM-215	Mica, TiO ₂ , SnO ₂	10 - 60 µm
Optique Pearl Violet	MIM-219	Mica, TiO ₂ , SnO ₂	10 - 60 µm

INTERFERENCE PIGMENTS

Product	Code	INCI	Particle Size
TC Bright Blue	X2225	Mica, TiO ₂ , SnO ₂	10 – 60 µm
TC Bright Gold	X2205	Mica, TiO ₂ , SnO ₂	10 – 60 µm
TC Bright Green	X2235	Mica, TiO ₂ , SnO ₂	10 – 60 µm
TC Bright Red	X2213	Mica, TiO ₂ , SnO ₂	10 – 60 µm
Optique Starlight Gold	MIM-4281	Mica, TiO ₂	6 – 85 µm
Optique Starlight Violet Carmine	MCM-4284	Mica, TiO ₂	6 – 85 µm
Optique Shimmer Blue	MIL-289	Mica, TiO ₂ , SnO ₂	10 – 100 µm
Optique Shimmer Gold	MIL-249	Mica, TiO ₂ , SnO ₂	10 – 100 µm
Optique Shimmer Green	MIL-299	Mica, TiO ₂ , SnO ₂	10 – 100 µm
Optique Shimmer Red	MIL-259	Mica, TiO ₂ , SnO ₂	10 – 100 µm
DP Sparkle Blue	M3019	Mica, TiO ₂ , SnO ₂	10 – 125 µm
DP Sparkle Gold	M2390	Mica, TiO ₂ , SnO ₂	10 – 125 µm
DP Sparkle Green	M8139	Mica, TiO ₂ , SnO ₂	10 – 125 µm
DP Sparkle Red	M2999	Mica, TiO ₂ , SnO ₂	10 – 125 µm
DP Sparkle Violet	M2199	Mica, TiO ₂ , SnO ₂	10 – 125 µm
Optique Sparkle Orange	MIL-SpO	Mica, TiO ₂ , SnO ₂	10 – 150 µm



INTRODUCING :

SANDREAM SPECIALTIES COLOR STUDIO

We are proud to present an innovative online tool which may be utilized by customers to streamline pigment choices from our extensive portfolio by application and desired effect. This feature displays outstanding visuals of our stunning pearlescent pigments enabling the user to make effective choices while providing an abundance of valuable information.

WWW.SDCOLORSTUDIO.COM

GOLD PIGMENTS



Eldorado Gold Satin
5 - 25 µm



Marvel Satin Amber Gold
5 - 25 µm



Marvel Satin Olive Gold
5 - 25 µm



Marvel Satin Pure Gold
5 - 25 µm



DP Classy Satin Gold
6 - 48 µm



DP Precious Gold
10 - 60 µm



Eldorado Red Gold
10 - 60 µm



Eldorado Royal Gold
10 - 60 µm



Marvel Desert Gold
10 - 60 µm



Mystic Green Gold
10 - 60 µm



TC Gold
10 - 60 µm



Marvel Gold
30 - 80 µm



Eldorado Gold Glitter
10 - 100 µm



Eldorado Gold Shimmer
10 - 100 µm



Marvel Rose Gold
10 - 100 µm

Product	Code	INCI	Particle Size
Eldorado Gold Satin	MGF-302	Mica, TiO ₂ , Iron Oxides, SnO ₂	5 - 25 µm
Marvel Satin Amber Gold	M376P	Mica, TiO ₂ , Iron Oxides, SnO ₂	5 - 25 µm
Marvel Satin Olive Gold	M375P	Mica, TiO ₂ , Iron Oxides, SnO ₂	5 - 25 µm
Marvel Satin Pure Gold	M325P	Mica, TiO ₂ , Iron Oxides, SnO ₂	5 - 25 µm
DP Classy Satin Gold	M3186	Mica, TiO ₂ , Iron Oxides	6 - 48 µm
DP Precious Gold	M3020	Mica, TiO ₂ , Iron Oxides, SnO ₂	10 - 60 µm
Eldorado Red Gold	MGM-307	Mica, TiO ₂ , Iron Oxides	10 - 60 µm
Eldorado Royal Gold	MGM-303	Mica, TiO ₂ , Iron Oxides, SnO ₂	10 - 60 µm
Marvel Desert Gold	M306P	Mica, TiO ₂ , Iron Oxides, SnO ₂	10 - 60 µm
Mystic Green Gold	M5031B	Mica, TiO ₂ , Iron Oxides, Ferric Ferrocyanide	10 - 60 µm
TC Gold	M3002	Mica, TiO ₂ , Iron Oxides	10 - 60 µm
Marvel Gold	M3081	Mica, Iron Oxides, Silica	30 - 80 µm
Eldorado Gold Glitter	MGL-355	Mica, TiO ₂ , Iron Oxides, SnO ₂	10 - 100 µm
Eldorado Gold Shimmer	MGL-351	Mica, TiO ₂ , Iron Oxides	10 - 100 µm
Eldorado Red Gold Shimmer	MGL-353	Mica, TiO ₂ , Iron Oxides, SnO ₂	10 - 100 µm
Marvel Rose Gold	M5332S	Mica, TiO ₂ , Iron Oxides, Carmine, SnO ₂	10 - 100 µm
Eldorado Sparkly Deep Gold	MGL-4315	Mica, TiO ₂ , Iron Oxides	20 - 150 µm

METALLIC PIGMENTS



Eldorado Satin Bronze
5 - 25 µm



Marvel Antique Gold
5 - 25 µm



Marvel Copper
5 - 25 µm



Chromatique Cupreous Brown
10 - 60 µm



DP Bronze
10 - 60 µm



Eldorado Breen
10 - 60 µm



Marvel Tangerine
10 - 60 µm



Marvel Tan Dust
10 - 60 µm



TC Camel
10 - 60 µm



Marvel Orange
30 - 80 µm



Midnight Bronze
5 - 85 µm



Chromatique Starlight Chestnut Brown
6 - 85 µm



Chromatique Starlight Golden Brown
6 - 85 µm



DP Flash Bronze
10 - 100 µm

Product	Code	INCI	Particle Size
Eldorado Satin Bronze	MMF-520	Mica, Iron Oxides	5 - 25 µm
Marvel Antique Gold	M2017	Mica, TiO ₂ , SnO ₂ , Black 2	5 - 25 µm
Marvel Copper	M9620	Mica, Iron Oxides, Silica	5 - 25 µm
Chromatique Cupreous Brown	MCM-4410	Mica, Iron Oxides	10 - 60 µm
DP Bronze	M5000	Mica, Iron Oxide	10 - 60 µm
Eldorado Breen	MMM-509	Mica, Iron Oxides	10 - 60 µm
Eldorado Reddish Brown	MMM-510	Mica, Iron Oxides	10 - 60 µm
Marvel Tangerine	M9660	Mica, Iron Oxides, Silica	10 - 60 µm
Marvel Tan Dust	M029LG	Mica, Iron Oxides	10 - 60 µm
TC Camel	W2445	Mica, Iron Oxides, TiO ₂ , Carmine	10 - 60 µm
Marvel Orange	M5181	Mica, Iron Oxides, Silica	30 - 80 µm
Midnight Bronze	MCM-Y0682	Mica, Iron Oxides	5 - 85 µm
Chromatique Starlight Chestnut Brown	MCM-4389	Mica, TiO ₂ , Iron Oxides	6 - 85 µm
Chromatique Starlight Golden Brown	MCM-4383	Mica, TiO ₂ , Iron Oxides	6 - 85 µm
DP Flash Bronze	M5302S	Mica, Iron Oxides	10 - 100 µm
Eldorado Bronze Shimmer	MML-530	Mica, Iron Oxides	10 - 100 µm
Chromatique Starlight Red Brown	MCL-4513	Mica, Iron Oxides	20 - 150 µm

RED/PINK PIGMENTS



Majestic Velvet Merlot
1 - 10 µm



Marvel Maroon
5 - 25 µm



Eldorado Satin Mauve
5 - 25 µm



Eldorado Satin Red
5 - 25 µm



Eldorado Satin Wine Red
5 - 25 µm



Majestic Cranberry
10 - 60 µm



Majestic Dragon Fruit
10 - 60 µm



Majestic Watermelon
10 - 60 µm



Mystic Light Red
10 - 60 µm



Mystic Pinkish
10 - 60 µm



TC Carmine Pink
10 - 60 µm



TC Cherry
10 - 60 µm



TC Ruby Red
10 - 60 µm



TC Violet Red
10 - 100 µm



Marvel Opal Pink-Green
50 - 100 µm

Product	Code	INCI	Particle Size
Majestic Velvet Merlot	MCS-506	Mica, Iron Oxides	1 - 10 µm
Marvel Maroon	M9820	Mica, Iron Oxides, Silica	5 - 25 µm
Eldorado Satin Mauve	MMF-525	Mica, Iron Oxides	5 - 25 µm
Eldorado Satin Red	MMF-522	Mica, Iron Oxides	5 - 25 µm
Eldorado Satin Wine Red	MMF-524	Mica, Iron Oxides	5 - 25 µm
Midnight Red	MCL-Y0683	Mica, TiO ₂ , Iron Oxides, Carmine, SnO ₂	5 - 60 µm
Majestic Cranberry	MCM-C06	Mica, Carmine	10 - 60 µm
Majestic Dragon Fruit	MCM-R274	Mica, Red 27	10 - 60 µm
Majestic Pomegranate	MCM-R284	Mica, Red 28	10 - 60 µm
Majestic Rhubarb	MCM-RIO4	Mica, IO Red	10 - 60 µm
Majestic Watermelon	MCM-R07	Mica, Red 7 Lake	10 - 60 µm
Mystic Light Red	M4239RS	Mica, TiO ₂ , FD&C Red 40 Al Lake, SnO ₂	10 - 60 µm
Mystic Fuchsia	M6432	Mica, TiO ₂ , Carmine	10 - 60 µm
Mystic Pinkish	M4219R	Mica, TiO ₂ , Red 7 Ca Lake, SnO ₂	10 - 60 µm
TC Carmine Pink	X7213	Mica, TiO ₂ , Carmine, SnO ₂	10 - 60 µm
TC Cherry	W6835	Mica, TiO ₂ , Iron Oxides	10 - 60 µm
TC Ruby Red	M5082	Mica, Iron Oxides	10 - 60 µm
Eldorado Red Brown	MMM-502	Mica, Iron Oxides	10 - 60 µm
Eldorado Wine Red	MMM-504	Mica, Iron Oxides	10 - 60 µm
Eldorado Mauve	MMM-505	Mica, Iron Oxides	10 - 60 µm
TC Violet Red	W8445	Mica, TiO ₂ , Carmine	10 - 100 µm
Eldorado Wine Red Glitter	MML-534	Mica, Iron Oxides	10 - 100 µm
Marvel Opal Pink-Green	M4392	Mica, TiO ₂ , Silica, SnO ₂ , Red 28	50 - 100 µm

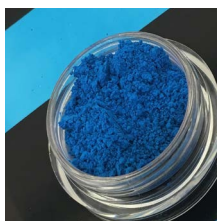
BLUE PIGMENTS



Majestic Velvet Blueberry
1 - 10 µm



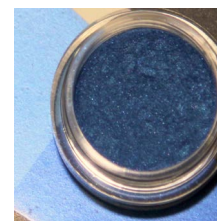
Marvel Antique Blue
5 - 25 µm



Majestic Blue Grape
10 - 60 µm



Majestic Blue Raspberry
10 - 60 µm



Mystic Aquatic Blue
10 - 60 µm

Product	Code	INCI	Particle Size
Majestic Velvet Blueberry	MCS-516	Mica, TiO ₂ , SnO ₂ , Ferric Ferrocyanide	1 - 10 µm
Marvel Antique Blue	M2217	Mica, TTiO ₂ , Tin Oxide, Black 2	5 - 25 µm
Chromatique Milori Blue	MCM-4425	Mica, TiO ₂ , Ferric Ferrocyanide	10 - 60 µm
Majestic Blue Grape	MCM-B14	Mica, Blue 1	10 - 60 µm
Majestic Blue Raspberry	MCM-UM4	Mica, Ultramarine Blue	10 - 60 µm
Marvel Aquamarine	M2350	Mica, TiO ₂ , SnO ₂ , Ferric Ferrocyanide	10 - 60 µm
Marvel Silver Blue	M5452	Mica, TiO ₂ , Ferric Ferrocyanide	10 - 60 µm
Mystic Aquatic Blue	M5251B	Mica, TiO ₂ , SnO ₂ , Ferric Ferrocyanide	10 - 60 µm

GREEN PIGMENTS



Marvel Antique Green
5 - 25 µm



Mystic Enchanted Green
10 - 60 µm

Product	Code	INCI	Particle Size
Marvel Antique Green	M2317	Mica, TiO ₂ , SnO ₂ , Black2	5 - 25 µm
Mystic Enchanted Green	M5351B	Mica, TiO ₂ , SnO ₂ , Ferric Ferrocyanide	10 - 60 µm

BLACK/GREY PIGMENTS



Chromatique Luster Black
10 - 60 µm



Chromatique Silver Gray
10 - 60 µm



Majestic Blackberry
10 - 60 µm

Product	Code	INCI	Particle Size
Chromatique Luster Black	MCM-4402	Mica, TiO ₂ , Iron Oxides	10 - 60 µm
Chromatique Silver Gray	MCM-4407	Mica, TiO ₂ , Iron Oxides	10 - 60 µm
Majestic Blackberry	MCM-BIO4	Mica, IO Black	10 - 60 µm

YELLOW/ORANGE PIGMENTS



DP Sunlit Cactus
10 - 60 µm



Majestic Carrot
10 - 60 µm



Majestic Mango
10 - 60 µm



Majestic Plantain
10 - 60 µm



Chromatique Yellow Green Pearl 10 - 70 µm

Product	Code	INCI	Particle Size
DP Sunlit Cactus	M6253	Mica, TiO ₂ , Iron Oxides, SnO ₂	10 - 60 µm
Majestic Carrot	MCM-Y02	Mica, Yellow 6 Lake	10 - 60 µm
Majestic Mango	MCM-Y05	Mica, Yellow 5 Lake	10 - 60 µm
Majestic Plantain	MCM-Y104	Mica, IO Yellow	10 - 60 µm
Chromatique Yellow Green Pearl	MCM-4313	Mica, TiO ₂ , Iron Oxides	10 - 70 µm

PURPLE/VIOLET PIGMENTS



Marvel Antique Purple
5 - 25 µm



Marvel Antique Violet
5 - 25 µm



Majestic Plum
10 - 60 µm



Mystic Periwinkle
10 - 60 µm



Mystic Sunset Purple
10 - 60 µm

Product	Code	INCI	Particle Size
Marvel Antique Purple	M2237	Mica, TiO ₂ , Tin Oxide, Black 2	5 - 25 µm
Marvel Antique Violet	M2117	Mica, TiO ₂ , Tin Oxide, Black 2	5 - 25 µm
Majestic Plum	MCM-MV4	Mica, Manganese Violet	10 - 60 µm
Mystic Periwinkle	M2130	Mica, TiO ₂ , Ferric Ferrocyanide, SnO ₂	10 - 60 µm
Mystic Purple	M2043E	Mica, TiO ₂ , Titanium/Titanium Dioxide, SnO ₂	10 - 60 µm
Mystic Sunset Purple	M5191B	Mica, TiO ₂ , SnO ₂ , Ferric Ferrocyanide	10 - 60 µm

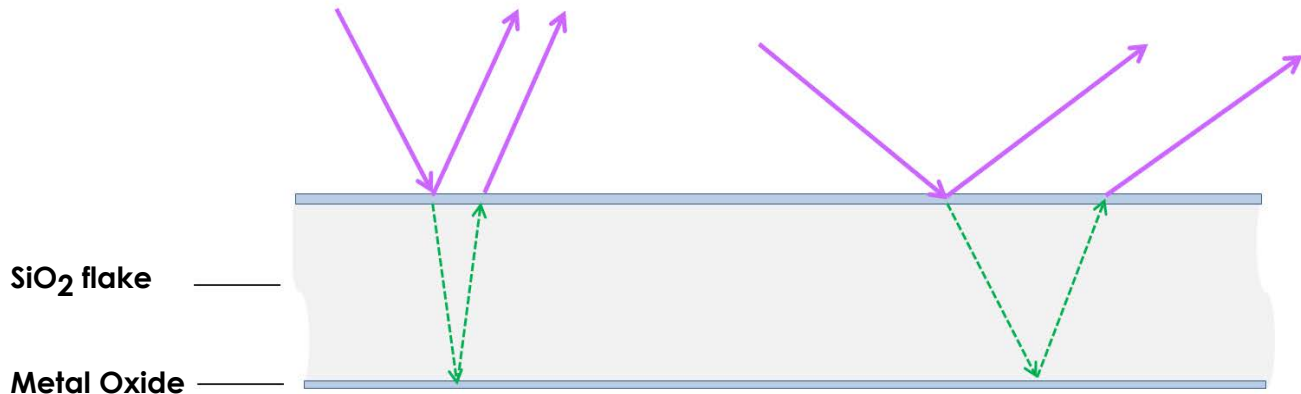
COLOR VARIABLE PIGMENTS

The technology behind Color Travel Pigments is the use of thin, precisely controlled coatings of titanium dioxide, or iron oxide, silica and tin oxide on mica platelets to separate white light into multiple component parts and produce up to four interference colors: three by reflection and one by transmission.

For a thin platelet, such as silica flakes, light passing from the air into the silica flake is partly reflected at the interface between the air and the silica flake (due to a higher refractive index). The rest of the light is refracted and transmitted to the bottom interface of silica, where the light is partially reflected again, back to the top surface. The smooth surface of these mica flakes produces a neutral mass tone, increased transparency and notable color intensity.

In the case of a system consisting of three thin layers of metal oxide coated silica flakes, the thickness of the silica layer will influence the path length of light. If the incident light is at a sharper or wider angle this directly effects the wavelength, resulting in different reflected colors.

These pigments are achromatic, highly transparent and have homogenous particle thickness. The transparency of the material allows for it to be used in conjunction with a background color for greater complexity.



Due to the **thickness of the silica layer**, the **path length (directly related to the color)** of the reflected light differs significantly.

If the incident light is at a sharper or wider angle, **the reflected light will have differing wavelengths of reflected light => different reflected colors.**

Variations in structure (silica thickness, mica/silica combinations, etc.) will lead to a range of pigments with a variety of color-travel effects.

General Rules for using color-travel pigments in cosmetics:

- "Formulation-dependent"; so trial-and-error still necessary
- Fluid applications (liquids, gels) always show off travel effect better
- Avoid complementary interference pigments
- Less is more: the more transparent the formula, the better the effect
 - > Mass-tone pigments: more transparency gives better effect
 - > Large sized mass-tone pigments can be combined with color-travel pigments to create very interesting effects
- Very large-sized color travel pigments (20- 200 microns) can be used to provide both color-travel and sparkle in ways previously unavailable to the cosmetic formulator.

COLOR VARIABLE PIGMENTS

Iridescent Pigments produce a distinctive dual-color appearance, creating striking and dramatic effects. All our Color Variable Pigments are based on Titanium Dioxide or Iron Oxide coated Mica with a thin layer of a Silicone Dioxide and Iron Oxide. Light interference from the Titanium Dioxide or Iron Oxide produces a reflection color seen as spectral highlight, while the second interference pigment imparts an additional spectral reflection that delivers a unique and subtle holographic effect.



MicaMira YGB64
10 - 40 µm



MicaMira BRO28
10 - 80 µm



MicaMira BVR29
10 - 80 µm



MicaMira ROG25
10 - 80 µm



MicaMira ROY26
10 - 80 µm



MicaMira VRO27
10 - 80 µm

Product	Code	INCI	Particle Size
MicaMira BRO68	MM6810	Mica, Iron Oxides, Silica	10 - 40 µm
MicaMira BVR69	MM6910	Mica, Iron Oxides, Silica	10 - 40 µm
MicaMira ROG65	MM6510	Mica, Iron Oxides, Silica	10 - 40 µm
MicaMira ROY66	MM6610	Mica, Iron Oxides, Silica	10 - 40 µm
MicaMira VRO67	MM6710	Mica, Iron Oxides, Silica	10 - 40 µm
MicaMira YGB64	MM6410	Mica, Iron Oxides, Silica	10 - 40 µm
MicaMira BRO48	MM4810	Mica, Iron Oxides, Silica	10 - 60 µm
MicaMira BVR49	MM4910	Mica, Iron Oxides, Silica	10 - 60 µm
MicaMira ROG45	MM4510	Mica, Iron Oxides, Silica	10 - 60 µm
MicaMira ROY46	MM4610	Mica, Iron Oxides, Silica	10 - 60 µm
MicaMira VRO47	MM4710	Mica, Iron Oxides, Silica	10 - 60 µm
MicaMira BRO28	MM2810	Mica, Iron Oxides, Silica	10 - 80 µm
MicaMira BVR29	MM2910	Mica, Iron Oxides, Silica	10 - 80 µm
MicaMira ROG25	MM2510	Mica, Iron Oxides, Silica	10 - 80 µm
MicaMira ROY26	MM2610	Mica, Iron Oxides, Silica	10 - 80 µm
MicaMira VRO27	MM2710	Mica, Iron Oxides, Silica	10 - 80 µm
MicaMira YGB24	MM2410	Mica, Iron Oxides, Silica	10 - 80 µm

COLOR VARIABLE PIGMENTS



Gemini GB-38
20 - 80 µm



Gemini IR-38
20 - 80 µm



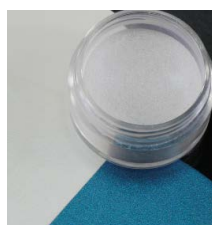
Gemini IY-38
20 - 80 µm



Gemini OR-38
20 - 80 µm



Gemini OV-38
20 - 80 µm



Gemini VC-38
20 - 80 µm



Gemini CS-18
20 - 80 µm



Gemini IO-18
20 - 80 µm



Gemini OB-18
20 - 80 µm



Gemini OR-18
20 - 80 µm



Gemini OV-18
20 - 80 µm



Gemini RC-18
20 - 80 µm



Gemini RG-18
20 - 80 µm

Product	Code	INCI	Particle Size
Gemini GB-38	FDM-GB-38	Mica, TiO ₂ , Silica	20 - 80 µm
Gemini IR-38	FDM-IR-38	Mica, TiO ₂ , Silica	20 - 80 µm
Gemini IY-38	FDM-IY-38	Mica, TiO ₂ , Silica	20 - 80 µm
Gemini OR-38	FDM-OR-38	Mica, TiO ₂ , Silica	20 - 80 µm
Gemini OV-38	FDM-OV-38	Mica, TiO ₂ , Silica	20 - 80 µm
Gemini VC-38	FDM-VC-38	Mica, TiO ₂ , Silica	20 - 80 µm
Gemini CS-18	FDM-CS-18	Mica, Iron Oxides, Silica	20 - 80 µm
Gemini IO-18	FDM-IO-18	Mica, Iron Oxides, Silica	20 - 80 µm
Gemini OB-18	FDM-OB-18	Mica, Iron Oxides, Silica	20 - 80 µm
Gemini OR-18	FDM-OR-18	Mica, Iron Oxides, Silica	20 - 80 µm
Gemini OV-18	FDM-OV-18	Mica, Iron Oxides, Silica	20 - 80 µm
Gemini RC-18	FDM-RC-18	Mica, Iron Oxides, Silica	20 - 80 µm

USAGE GUIDE

Approved for use in

■ Americas ▲ EU ● Asia

Conditionally approved in selected countries

■ Americas ▲ EU ● Asia

Not approved for use in

■ Americas ▲ EU ● Asia

Category	Product	Code	Eye	Lip	Face	Nail	Personal Care
WHITE/SILVER PIGMENTS	please refer to page 1 for a full list of white mica pearl pigments		■ ▲ ●	■ ▲ ●	■ ▲ ●	■ ▲ ●	■ ▲ ●
	Impact Silver Sparkle (>150µm)	MWL-163	■ ▲ ●	■ ▲ ●	■ ▲ ●	■ ▲ ●	■ ▲ ●
INTERFERENCE PIGMENTS	please refer to page 3-4 for a full list of interference pearl pigments		■ ▲ ●	■ ▲ ●	■ ▲ ●	■ ▲ ●	■ ▲ ●
GOLD PIGMENTS	please refer to page 5 for a full list of gold pearl pigments		■ ▲ ●	■ ▲ ●	■ ▲ ●	■ ▲ ●	■ ▲ ●
	Mystic Green Gold	M5031B	■ ▲ ●	■ ▲ ●	■ ▲ ●	■ ▲ ●	■ ▲ ●
METALLIC PIGMENTS	please refer to page 6 for a full list of metallic pearl pigments		■ ▲ ●	■ ▲ ●	■ ▲ ●	■ ▲ ●	■ ▲ ●
RED/PINK PIGMENTS	Majestic Velvet Merlot	MCS-506	■ ▲ ●	■ ▲ ●	■ ▲ ●	■ ▲ ●	■ ▲ ●
	Majestic Cranberry	MCM-C06	■ ▲ ●	■ ▲ ●	■ ▲ ●	■ ▲ ●	■ ▲ ●
	Majestic Rhubarb	MCM-RIO4	■ ▲ ●	■ ▲ ●	■ ▲ ●	■ ▲ ●	■ ▲ ●
	Majestic Watermelon	MCM-R07	■ ▲ ●	■ ▲ ●	■ ▲ ●	■ ▲ ●	■ ▲ ●
	Majestic Dragon Fruit	MCM-R274	■ ▲ ●	■ ▲ ●	■ ▲ ●	■ ▲ ●	■ ▲ ●
	Majestic Pomegranate	MCM-R284	■ ▲ ●	■ ▲ ●	■ ▲ ●	■ ▲ ●	■ ▲ ●
	Marvel Maroon	M9820	■ ▲ ●	■ ▲ ●	■ ▲ ●	■ ▲ ●	■ ▲ ●
	Mystic Light Red	M4239RS	■ ▲ ●	■ ▲ ●	■ ▲ ●	■ ▲ ●	■ ▲ ●
	Mystic Fuchsia	M6432	■ ▲ ●	■ ▲ ●	■ ▲ ●	■ ▲ ●	■ ▲ ●
	Mystic Pinkish	M4219R	■ ▲ ●	■ ▲ ●	■ ▲ ●	■ ▲ ●	■ ▲ ●
	TC Carmine Pink	X7213	■ ▲ ●	■ ▲ ●	■ ▲ ●	■ ▲ ●	■ ▲ ●
	TC Cherry	W6835	■ ▲ ●	■ ▲ ●	■ ▲ ●	■ ▲ ●	■ ▲ ●
	TC Ruby Red	M5082	■ ▲ ●	■ ▲ ●	■ ▲ ●	■ ▲ ●	■ ▲ ●
	TC Violet Red	W8445	■ ▲ ●	■ ▲ ●	■ ▲ ●	■ ▲ ●	■ ▲ ●
	Marvel Opal Pink-Green	M4392	■ ▲ ●	■ ▲ ●	■ ▲ ●	■ ▲ ●	■ ▲ ●
	Eldorado Satin Red	MMF-522	■ ▲ ●	■ ▲ ●	■ ▲ ●	■ ▲ ●	■ ▲ ●
	Eldorado Satin Wine Red	MMF-524	■ ▲ ●	■ ▲ ●	■ ▲ ●	■ ▲ ●	■ ▲ ●
	Midnight Red	MCL-Y0683	■ ▲ ●	■ ▲ ●	■ ▲ ●	■ ▲ ●	■ ▲ ●
	Eldorado Red Brown	MMM-502	■ ▲ ●	■ ▲ ●	■ ▲ ●	■ ▲ ●	■ ▲ ●
	Eldorado Wine Red	MMM-504	■ ▲ ●	■ ▲ ●	■ ▲ ●	■ ▲ ●	■ ▲ ●
Eldorado Wine Red Glitter	MML-534	■ ▲ ●	■ ▲ ●	■ ▲ ●	■ ▲ ●	■ ▲ ●	
BLUE PIGMENTS	Majestic Blue Grape	MCM-B14	■ ▲ ●	■ ▲ ●	■ ▲ ●	■ ▲ ●	■ ▲ ●
	Majestic Blue Raspberry	MCM-UM4	■ ▲ ●	■ ▲ ●	■ ▲ ●	■ ▲ ●	■ ▲ ●
	Majestic Velvet Blueberry	MCS-516	■ ▲ ●	■ ▲ ●	■ ▲ ●	■ ▲ ●	■ ▲ ●
	Marvel Antique Blue	M2217	■ ▲ ●	■ ▲ ●	■ ▲ ●	■ ▲ ●	■ ▲ ●
	Marvel Aquamarine	M2350	■ ▲ ●	■ ▲ ●	■ ▲ ●	■ ▲ ●	■ ▲ ●
	Mystic Aquatic Blue	M5251B	■ ▲ ●	■ ▲ ●	■ ▲ ●	■ ▲ ●	■ ▲ ●
	Mystic Deep Indigo	M65253	■ ▲ ●	■ ▲ ●	■ ▲ ●	■ ▲ ●	■ ▲ ●
	Chromatique Milori Blue	MCM-4425	■ ▲ ●	■ ▲ ●	■ ▲ ●	■ ▲ ●	■ ▲ ●
GREEN PIGMENTS	Marvel Antique Green	M2317	■ ▲ ●	■ ▲ ●	■ ▲ ●	■ ▲ ●	■ ▲ ●
	Mystic Enchanted Green	M5351B	■ ▲ ●	■ ▲ ●	■ ▲ ●	■ ▲ ●	■ ▲ ●
YELLOW/ORANGE PIGMENTS	Marvel Tangerine	M9660	■ ▲ ●	■ ▲ ●	■ ▲ ●	■ ▲ ●	■ ▲ ●
	Majestic Carrot	M5181	■ ▲ ●	■ ▲ ●	■ ▲ ●	■ ▲ ●	■ ▲ ●
	Majestic Mango	MCM-Y02	■ ▲ ●	■ ▲ ●	■ ▲ ●	■ ▲ ●	■ ▲ ●
	Majestic Plantain	MCM-YIO4	■ ▲ ●	■ ▲ ●	■ ▲ ●	■ ▲ ●	■ ▲ ●
	Marvel Orange	MCM-Y05	■ ▲ ●	■ ▲ ●	■ ▲ ●	■ ▲ ●	■ ▲ ●
	DP Sunlit Cactus	M6253	■ ▲ ●	■ ▲ ●	■ ▲ ●	■ ▲ ●	■ ▲ ●
	Chromatique Yellow Green Pearl	MCM-4313	■ ▲ ●	■ ▲ ●	■ ▲ ●	■ ▲ ●	■ ▲ ●
PURPLE/VIOLET PIGMENTS	Majestic Plum	MCM-MV4	■ ▲ ●	■ ▲ ●	■ ▲ ●	■ ▲ ●	■ ▲ ●
	Marvel Antique Purple	M2237	■ ▲ ●	■ ▲ ●	■ ▲ ●	■ ▲ ●	■ ▲ ●
	Marvel Antique Violet	M2117	■ ▲ ●	■ ▲ ●	■ ▲ ●	■ ▲ ●	■ ▲ ●
	Mystic Sunset Purple	M5191B	■ ▲ ●	■ ▲ ●	■ ▲ ●	■ ▲ ●	■ ▲ ●
	Mystic Periwinkle	M2130	■ ▲ ●	■ ▲ ●	■ ▲ ●	■ ▲ ●	■ ▲ ●
Mystic Purple	M2043E	■ ▲ ●	■ ▲ ●	■ ▲ ●	■ ▲ ●	■ ▲ ●	
BLACK/GREY PIGMENTS	please refer to page 8 for a full list of black/gray pearl pigments		■ ▲ ●	■ ▲ ●	■ ▲ ●	■ ▲ ●	■ ▲ ●
COLOR VARIABLE PIGMENTS	please refer to page 11-12 for a full list of color variable pearl pigments		■ ▲ ●	■ ▲ ●	■ ▲ ●	■ ▲ ●	■ ▲ ●

* Usage Guide Statement: The information included in this usage guide is given in good faith and represents our best present state of knowledge but is offered without any guarantee or warranty. It is your responsibility to confirm this information with your regulatory department. *For Mica based pigments, the FDA limits the particle size for eyes to maximum 150 microns.

SANDREAM SPECIALITIES – COMPLETE PRODUCT PORTFOLIO

Color Effect	White/Silver	Interference	Color	Color Travel	Dispersion
Mica Based Pearl Series					
Chromatique	V		V		
DP/TC	V	V	V		
Eldorado			V		
Gemini				V	
Impact	V				
Majestic			V		
Marvel		V	V		
MicaMira					
Midnight			V		
Mystic			V		
Optique		V			
Glass Based Pearl Series					
Diamond	V	V	V	V	
Glamour	V	V	V		
GlassMira				V	
Synthetic Fluorphlogopite Based Series					
Fiesta	V	V	V	V	
Sachet	V	V	V		
Smokey			V		
SynMira				V	
Aluminum Based Series					
Alchemique	V		V		
SDI Duo			V		
Silver Coated Glass					
Sterling	V				
Silica Color Variable					
SilikMira				V	
Magni Series					
Mogni-Charged Super			V		
Magni-Mira				V	
Illumina Series					
Illumina			V		
Glitters & Holographic Series					
Spectra	V		V	V	
Confetti	V		V		
Laser Effect Color Variable					
Fantasy	V		V	V	
Bismuth Oxychloride					
Biluna	V				
Bichroma			V		
Powders and Fillers					
Powders and Fillers	V		V		
Naturally Dispersed Pigment Series					
Olivperse					V
Other Pigments					
Carmine			V		
Thermochromatic				V	
Photochromatic				V	
Glow in the Dark			V		
Surface Treated Pearl		V			
Dream Fx Visual Delivery Systems					

Disclaimer: The information described above is offered solely for the User's consideration, investigation and independent verification. It is up to the User to decide whether or how to use this information. Sandream Specialities makes no warranty about the accuracy or completeness of the information contained herein or the suitability of any of their products for the User's specific intended use. Furthermore, all express or implied warranties of noninfringement, merchantability or fitness for a particular purpose are hereby disclaimed. Sandream Specialities assumes no responsibility for any liability or damages arising out of or relating to the foregoing.

January 2022



373 RT. 46 W, Building E
Fairfield, NJ
07004, U.S.A.

O +1 973.882.3077
F +1 973.882.3088

www.sandreamspecialties.com
info@sandreamspecialties.com



Scan QR code to
visit our website for more
product information & TDS