

PIGMENTS, POWDERS, & FILLERS



2021 Product Brochure



sandream
specialties
A VIVIFY COMPANY



INSPIRATION

DELIVERED

About Sandream Specialties

Sandream Specialties is a leading manufacturer and supplier of innovative effect pigments and unique cosmetic active ingredients. It was formed by merger of Sandream Enterprises and Impact Colors in January 2016 and later became a member of the Aakash Chemicals & Dye-Stuffs group in October 2018. Our R&D and production site in the U.S. offers color matching, new color development, formulation, dispersion, blending and surface treatment services.

Sandream Specialties' specialties include color travel pigments on five different substrates, fluorophlogopite and aluminum based high definition colors, natural ester dispersed pigments, bismuth powders, clinically proven anti-aging, whitening and brightening agents, formulations/ingredients/delivery systems to enhance long wear, penetration, feel etc. Together with its member companies and strategic partners in North America, Latin America, Europe and Asia, Sandream Impact provides:

- The most diversified portfolio of special effect pigments
- Quality and competitive pricing
- Superior customer service
- Local inventory with prompt delivery
- Technical and Regulatory support
- Access to global resources

Mission Statement

Sandream Specialties is a team of passionate and enthusiastic experts focused on providing technically advanced products that will provide our customer base and the consumer marketplace with maximum visual impact and inspiration. We are committed to providing products that are environmentally safe, clean, consistent and effective. We are committed to ethical practices in our dealings with our customers, suppliers, staff and community at large.

For any questions or inquiries,

Please call +1 973.882.3077 or email us at info@sandreamspecialties.com

Visit our website: www.sandreamspecialties.com

PIGMENTS

POWDERS

& FILLERS

Sandream Specialties is delighted to offer cosmetic chemists a full selection of powders designed to provide numerous benefits. Our powders may be utilized as main base components, fillers in cosmetic formulations, or to create unique sensory profiles with added benefits such as increased coverage, slip, flow, oil absorption, low luster, soft focus and many more.

Our collection of micas and synthetic micas provides options ranging from soft elegant veils that fill out your formulation without hiding colorants, to higher payoff or treated products which serve a variety of purposes including tactile feel, texture and enhanced wear.

In addition, Sandream Specialties offers Soft Focus powders, Silicas and Boron Nitrides which hide imperfections while delivering softness and smoothness.



CONTENT

MICA BASED FILLERS	1
.....	
TREATED MICA POWDERS	1
.....	
CARMINE NATURAL COLOR LAKES	1
.....	
FLUORPHLOGOPITE FILLERS AND TREATED FLUORPHLOGOPITE	2
.....	
TALC POWDERS AND TREATED TALC	2
.....	
BORON NITRIDE POWDER AND TREATED BORON NITRIDE	2
.....	
SILICA POWDER AND TREATED SILICA	2
.....	
TREATED TITANIUM DIOXIDE AND IRON OXIDES	2
.....	
SOFT FOCUS POWDERS AND PEARLS	3
.....	
ECOPERSE PIGMENT DISPERSIONS	6
.....	
USAGE GUIDE	10
.....	

MICA BASED FILLERS

Product	Code	INCI	Particle Size
Sericite	AH8310	Mica	<15 µm
Sericite	AH8325	Mica	3 - 25 µm
Impact Matte Mica T	B1250W	Mica	1 - 20 µm
Impact Satin Mica	U0626	Mica	6 - 26 µm
SDI Sericite White	SDI-SW	Mica	1 - 30 µm
SDI Matte White Mica	SDI-MW	Mica, TiO ₂	1 - 30 µm
SDI Matte Yellow Mica	SDI-MY	Mica, Iron Oxides	1 - 30 µm
SDI Matte Red Mica	SDI-MR	Mica, Iron Oxides	1 - 30 µm
SDI Matte Black Mica	SDI-MB	Mica, Iron Oxides	1 - 30 µm

TREATED MICA POWDERS

Product	Code	INCI	Particle Size
Impact Mica LL3	M-LL3	Mica, Lauroyl Lysine	< 15 µm
Mica	HL	Mica, Hydrogenated Lecithin	5 - 25 µm
SanMica 713 AS	PFM-713	Mica, Triethoxycaprylylsilane	7 - 13 µm

CARMINE NATURAL COLOR LAKES

Product	Code	Remark
Carmin Lake Brilliant 52%	Brilliant Red	Insoluble in water. Soluble in strong acid and alkali
Carmin Red Q 50%	Brilliant Red	Insoluble in water. Soluble in strong acid and alkali
Carmin Red Yellow 50%	Red-Yellow	Insoluble in water. Soluble in strong acid and alkali
Carmin Violet 50%	Purple	Insoluble in water. Soluble in strong acid and alkali
Carmin WS Y 50%	Dark Brown	Soluble in water

**Other colors are available upon request*

FLUORPHLOGOPITE FILLERS AND TREATED FLUORPHLOGOPITE

Product	Code	INCI	Particle Size
SanMica	F15	Synthetic Fluorphlogopite	<15 µm
SanMica	F525E	Synthetic Fluorphlogopite	5 - 25 µm
SanMica	F1060	Synthetic Fluorphlogopite	10 - 60 µm
SanMica	F50250	Synthetic Fluorphlogopite	50 - 250 µm
SanMica	F200700	Synthetic Fluorphlogopite	200 - 700 µm
Fiesta SynPearl Mica	FL-SPL	Synthetic Fluorphlogopite	10 - 45 µm
SanMica	DM10	Fluorphlogopite, Dimethicone	<10 µm
SanMica	DM1060	Fluorphlogopite, Dimethicone	10 - 60 µm

BORON NITRIDE POWDER AND TREATED BORON NITRIDE

Product	Code	INCI	Particle Size
SanBornit 408	PFB-408	Boron Nitride	4 - 8 µm
SanBornit 1014	PFB-1014	Boron Nitride, Dimethicone	10 - 14 µm

SILICA POWDER AND TREATED SILICA

Product	Code	INCI	Particle Size
SanSilica 307	PFS-307	Silica	3 - 7 µm
SanSilica 610 AS	PFS-610	Silica, Triethoxycaprylylsilane	6 - 10 µm

TALC POWDER AND TREATED TALC

Product	Code	INCI	Particle Size
SanTalc 511	PFT-511	Talc	5 - 11 µm
SanTalc 13AS	PFT-13	Talc, Triethoxycaprylylsilane	5 - 10 µm
Talc	MM3D1	Talc, Magnesium Myristate, Dimethicone	<15 µm

TREATED TITANIUM DIOXIDE AND IRON OXIDES

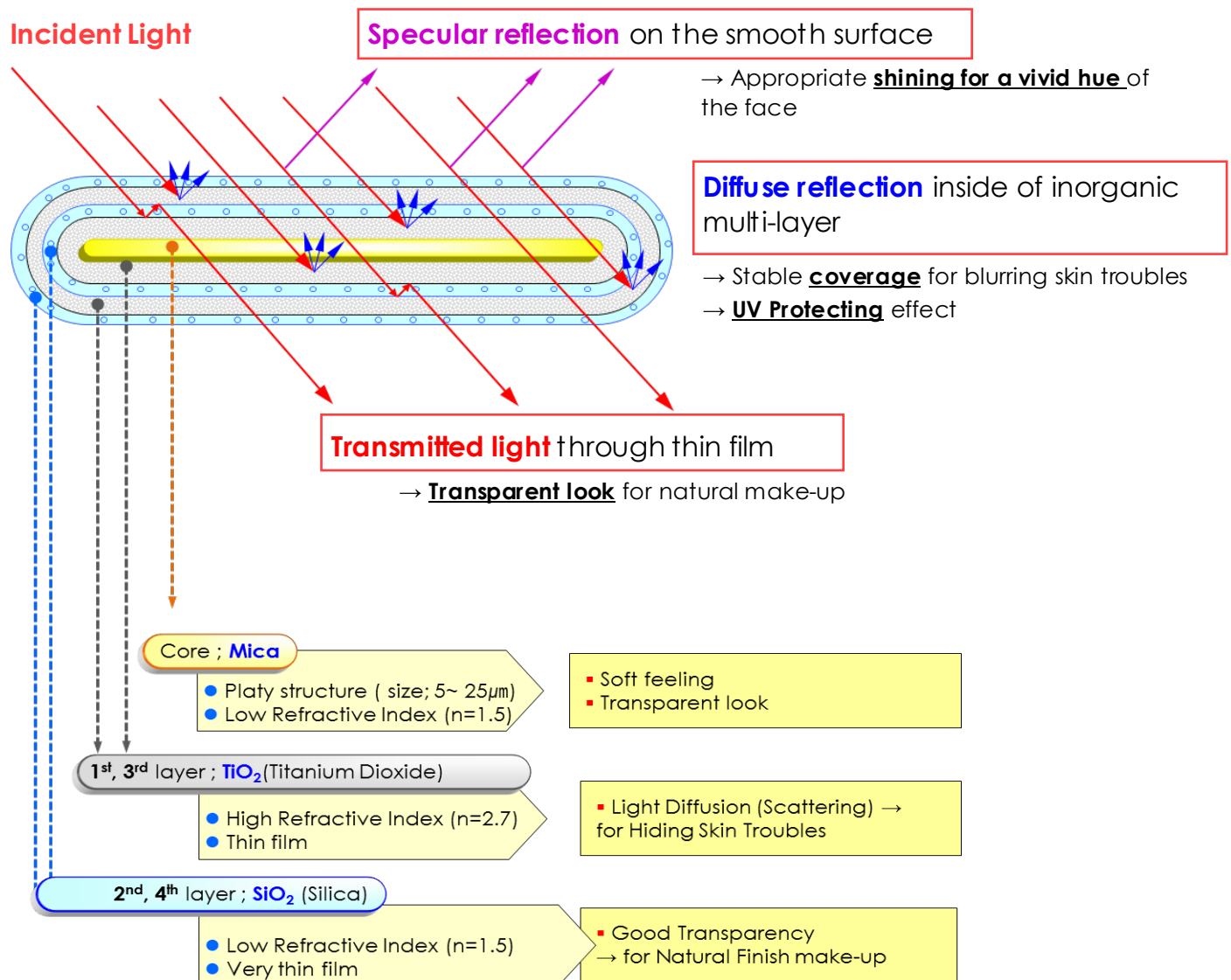
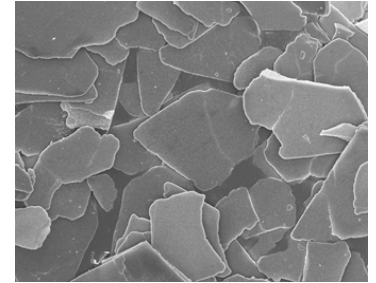
Product	Code	INCI	Particle Size
SDI TiO2 AS	PFD-TAS	Titanium Dioxide, Triethoxycaprylylsilane	<1.0 µm
SDI Black IO AS	PFI-BAS	Iron Oxides, Triethoxycaprylylsilane	<1.5 µm
SDI Red IO AS	PFI-RAS	Iron Oxides, Triethoxycaprylylsilane	<1.5 µm
SDI Yellow IO AS	PFI-YAS	Iron Oxides, Triethoxycaprylylsilane	<1.5 µm

SOFT FOCUS POWDERS AND PEARLS

Product	Code	INCI	Particle Size
SD Soft Cover Powder	SF515	Mica, MgO	5 - 15 μm
SD Soft White	SN100	Mica, TiO_2 , SiO_2 , SnO_2	10 - 60 μm
SD Soft Gold	SL100	Mica, TiO_2 , SiO_2 , SnO_2	10 - 60 μm
SD Soft Red	SL200	Mica, TiO_2 , SiO_2 , SnO_2	10 - 60 μm
SD Soft Violet	SL300	Mica, TiO_2 , SiO_2 , SnO_2	10 - 60 μm
SD Soft Blue	SL400	Mica, TiO_2 , SiO_2 , SnO_2	10 - 60 μm
SD Soft Green	SL500	Mica, TiO_2 , SiO_2 , SnO_2	10 - 60 μm

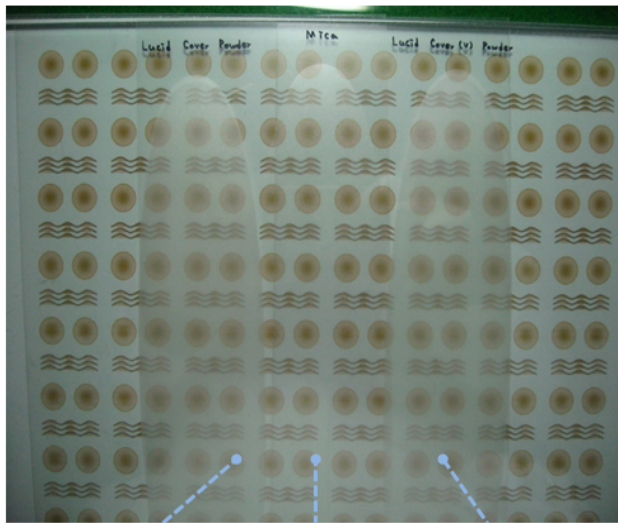
The Structure & Mechanism of Soft Focus Effect Powders

- ◆ **Smooth Surface** by regular coating process
- ◆ **Optimum Thickness** of the coated layer
- ◆ The **alternately coated multi-layer** of inorganics having High & Low refractive index

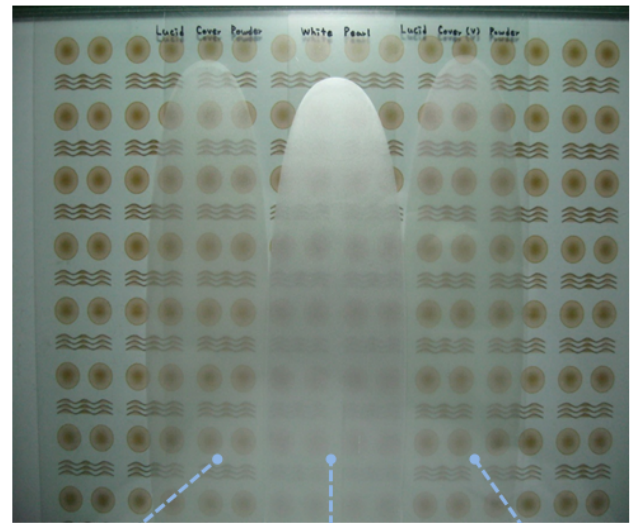


Transmittance Test Results

- Method : Draw down test on the surface of glass(5mm)
- Sample : 6wt% of powder in Nitrocellulose lacquer
- Film thickness : 100 μ m



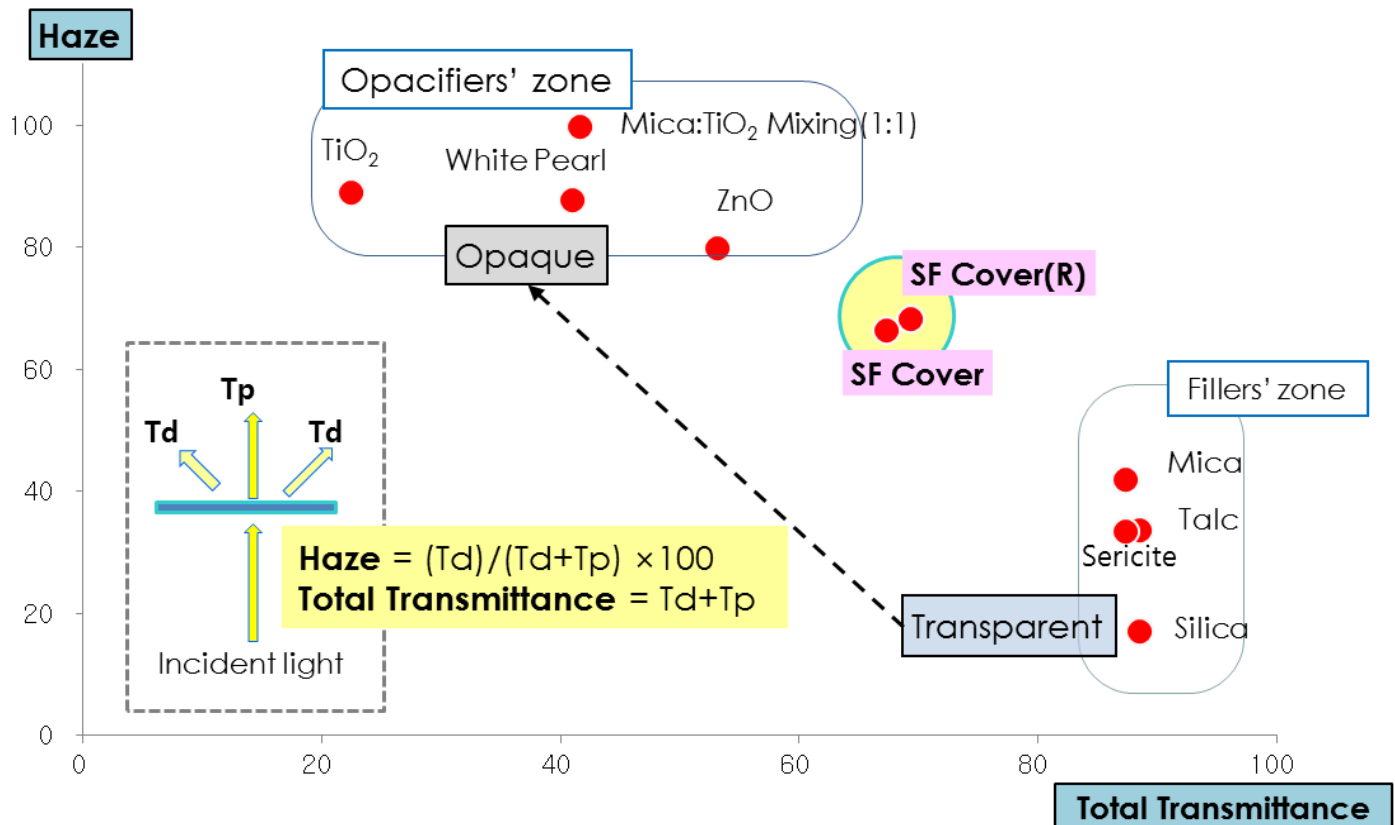
SF Cover (TiO₂: 52wt%) Natural Mica SF Cover (R) (TiO₂: 56wt%)



SF Cover (TiO₂: 52wt%) White Pearl (TiO₂: 40wt%) SF Cover (R) (TiO₂: 56wt%)

Haze & Total Transmittance Test Results

- Method : Draw down test on the transparent film
- Sample : 6wt% of powder in Nitrocellulose lacquer
- Film thickness : 100 μ m
- Measuring instrument : Haze analyzer



ECOPERSE - NATURAL ESTER DISPERSED PIGMENTS

Looking for natural dispersed, non-volatile, high quality Iron Oxides, TiO₂, D&C and other pigment dispersions?

Ecoperse is probably your best choice.

Our natural dispersant is a specialty ester with INCI name Octyldodecyl Oleate. It is naturally derived from Olive Oil and is ideal for dispersing pigments in color applications. The initial spread is light and fast absorbing with a soft smooth after feel on skin. It also provides excellent lubricating properties without imparting a heavy, greasy feel.

Ecoperse (dispersed pigment using above natural ester) contains high load of pigment (45-75%), flows very well and is highly compatible with other natural oils and ingredients. It also has greater stability and better performance than silicone types. It's an excellent naturally dispersed pigment for your foundation, BB cream, lip stick and other makeup applications.

We have various shades available and can also customize specific shades for you.

KEY PERFORMANCE BENEFITS

- Naturally based ester, derived from olive oil
- Absorbs quickly into skin leaving uniform color coverage
- Soft, non-greasy spread profile - ideal to replace volatile silicones
- Contains high load pigments
- Excellent flow and stability to minimize cracking on the skin

RECOMMENDED APPLICATIONS

- Foundations
- BB Creams
- Sun Care and Skin Care
- Lip sticks, eye shadows and other makeups



INTRODUCING: SANDREAM SPECIALTIES COLOR STUDIO

We are proud to present an innovative online tool which may be utilized by customers to streamline pigment choices from our extensive portfolio by application and desired effect. This feature displays outstanding visuals of our stunning pearlescent pigments enabling the user to make effective choices while providing an abundance of valuable information.

WWW.SDICOLORSTUDIO.COM

ECOPERSE AND ECOCARE PIGMENT DISPERSIONS



Ecoperse Black IO



Ecoperse Brown IO



Ecoperse Red IO



Ecoperse Yellow IO



Ecoperse White



Ecoperse Tan



Ecoperse Red 6



Ecoperse Blue 1



Ecoperse Yellow 5

Product	Code	Color	Composition	Pigment Load
Ecoperse - Finely Milled Pigment Dispersion in Natural Octyldodecyl Oleate for a Variety of Cosmetic Applications				
Ecoperse Black IO*	BIO-33133	Black	Octyldodecyl Oleate, Black Iron Oxide	62.0 - 67.0%
Ecoperse Brown IO*	BrIO-33115	Brown	Octyldodecyl Oleate, Brown Iron Oxide	50.0 - 55.0%
Ecoperse Red IO*	RIO-338075	Red	Octyldodecyl Oleate, Red Iron Oxide	42.0 - 47.0%
Ecoperse Yellow IO*	YIO-33032	Yellow	Octyldodecyl Oleate, Yellow Iron Oxide	42.0 - 50.0%
Ecoperse White*	W-47051	White	Octyldodecyl Oleate, Titanium Dioxide	52.0 - 60.0%
Ecoperse Tan	T-35132	Tan	Octyldodecyl Oleate, TiO ₂ , Iron Oxides	40.0 - 60.0%
Ecoperse Red 6	R6L-D94	Bright Red	Octyldodecyl Oleate, D&C Red 6 Ba Lake	47.0 - 54.0%
Ecoperse Blue 1	B1L-39443	Blue-Black	Octyldodecyl Oleate, FD&C Blue1 Al Lake	42.0 - 47.0%
Ecoperse Yellow 5	Y5L-69002	Yellow Orange	Octyldodecyl Oleate, FD&C Yellow 5 Al Lake	42.0 - 47.0%

*Regularly Stocked in NJ USA

Note: We also supply other organic pigment dispersion, please check for availability.

NOO Crystal

EcoCert-certified Disperser/Emollient/Shine Enhancer

With up to 1 % vitamin E acetate, Sandream Impact NOO Crystal has various benefits from anti-aging to sun protection. In addition, NOO Crystal is customized to deliver a fast absorbing spread profile while providing the formulation with non-greasy and cushiony after-feel. It is ideal for color cosmetic, skin, hair, and body care application.

INCI Name: Octyldodecyl Oleate and Tocopheryl Acetate

Applications:

Color Cosmetics, Facial Care, Hair Care, Body Care, Sun Care.

Properties:

- Contribute to Anti-Aging Properties
- Contribute to Sun Protection
- Help to Increase Moisturization
- Non-Greasy and Cushiony after-feel
- Adds tremendous shine to hair and body.
- Adds lubricity to loose and press powder for a luxe-feel.
- Natural Attributes Derived from Olive
- Can be used for cleansing oil for facial care.
- Can be used for natural high shine lip gloss.



Appearance: Clear Liquid

Odor: Odorless

Formulation/Processing Guidelines:

Disperse in oil phase. Compatible with other esters, silicones, nonpolar oils.

Recommend Usage Levels: 5-40% for all applications listed above

Legislations:

Global Compliance: US, Europe, Japan, and China.

Highlight of Active Cosmetic Ingredients

Skin Whiteners/Lighteners and Anti-Inflammatory Agents:

- SD Duo-Bright-C (Ethyl Ascorbic Acid) – a better alternative to AA2G, clinically proven*
- Raspberry Ketone Glucoside (RKG) - clinically proven*
- Capryloyl Salicylic Acid *
- Magnesium Ascorbyl Phosphate *
- Arbutin – Beta and Alpha *
- Kojic Acid *
- Glabridin 40% *
- Stearyl Glycyrrhetinate *
- Dipotassium Glycyrrhizinate *
- Glycyrrhizic Acid 98% *
- 18 β - Glycyrrhetic Acid *
- Monoammonium Glycyrrhizinate *
- Salicylic Acid *

Anti-aging, Anti-oxidant & Moisturizing, Conditioning Agents:

- Plant Stem Cells—e.g. Orchid, Lotus, Tomato, Ginseng, Rose, Green Tea, Rice, Carrot, Grape
- Hyaluronic Acid (MW<15KDa, <40KDa, <500KDa, 1-1.5MDa, 1.5-2MDa, >2MDa) *
- N-Acetyl D Glucosamine *
- Chitosan *
- D and DL-Panthenol *
- PearlPure Sea Water Pearl Powder *
- ResPure Resveratrol *
- BLE-40 Bamboo Leaf Extract (40% Flavonoid and 20% Lactone) *

Silicone Elastomers and Oil:

- SanSil D-5 Free Silicone Elastomers *
- SanSil Dimethicone Elastomers *
- SanFluid Phenyl Trimethicone *

Hydrogenated Polydecene:

- PureSyn Series (2,4 and 6)- Polyalphaolefins *
- ClearSyn 150 and 300 *

Natural Emulsifier and Emollient:

- Natural Octyldodecyl Olivatate (N.O.O.) - EcoCert-certified natural emollient *
- NOO Crystal—Octyldodecyl Olivatate and Vitamin E

Sunscreen/UV Absorbers:

- Benzophenone-1, 2, 3, 4 *
- BMDM (Avobenzone) *
- Octocrylene *
- Etocrylene *
- Homosalate *
- Octyl Salicylate

Vitamins and Cosmeceuticals:

- Vitamin-E, C and B family *
- Various Amino Acids and Natural Extracts

Preservatives/Disinfectants:

- Parabens – Methyl, Propyl * (and Butyl and Ethyl)
- Triclosan USP
- Allantoin *
- Imidazolidinyl Urea *
- Diazolidinyl Urea *

Color Dispersion/ Effect Pigments:

- EcoPerse - EcoCert-certified Colorant Dispersions *
- Soft Focus & Bismuth, Boron Nitride, Silica and Various Surface-treated Powders*
- Dream Fx: Visual Delivery Systems – Petals, Softlets, Colors, and Vision Beads *
- Full Line of Effect Pigments (Please refer to our pigment division) *

Usage Guide*

Approved for use in:
■ Americas ▲ EU ● Asia

Conditionally approved in selected countries:
■ Americas ▲ EU ● Asia

NOT approved for use in:
■ Americas ▲ EU ● Asia

Category	Product Name	Code	Eye			Lip			Face			Nail			Personal Care		
Mica Based Fillers	please refer to page 1 for a full list of pearl pigments		■	▲	●	■	▲	●	■	▲	●	■	▲	●	■	▲	●
Treated Mica Powders	please refer to page 1 for a full list of pearl pigments		■	▲	●	■	▲	●	■	▲	●	■	▲	●	■	▲	●
Carmine Natural Color Lakes	please refer to page 1 for a full list of pearl pigments		■	▲	●	■	▲	●	■	▲	●	■	▲	●	■	▲	●
Synthetic Fluorophlogopite and Treated Based Fillers	please refer to page 2 for a full list of pearl pigments		■	▲	●	■	▲	●	■	▲	●	■	▲	●	■	▲	●
Talc and Treated Talc Powders	please refer to page 2 for a full list of pearl pigments		■	▲	●	■	▲	●	■	▲	●	■	▲	●	■	▲	●
Boron Nitride and Treated Boron Nitride Fillers	please refer to page 2 for a full list of pearl pigments		■	▲	●	■	▲	●	■	▲	●	■	▲	●	■	▲	●
Silica and Treated Silica Fillers	please refer to page 2 for a full list of pearl pigments		■	▲	●	■	▲	●	■	▲	●	■	▲	●	■	▲	●
Treated Titanium Dioxide & Iron Oxides	please refer to page 2 for a full list of pearl pigments		■	▲	●	■	▲	●	■	▲	●	■	▲	●	■	▲	●
Soft Focus Powders and Pearls	please refer to page 3 for a full list of pearl pigments		■	▲	●	■	▲	●	■	▲	●	■	▲	●	■	▲	●
Ecoperse Pigment Dispersion	Ecoperse Black IO	BIO-33133	■	▲	●	■	▲	●	■	▲	●	■	▲	●	■	▲	●
	Ecoperse Brown IO	BrIO-33115	■	▲	●	■	▲	●	■	▲	●	■	▲	●	■	▲	●
	Ecoperse Red IO	RIO-338075	■	▲	●	■	▲	●	■	▲	●	■	▲	●	■	▲	●
	Ecoperse Yellow IO	YIO-33032	■	▲	●	■	▲	●	■	▲	●	■	▲	●	■	▲	●
	Ecoperse White	W-47051	■	▲	●	■	▲	●	■	▲	●	■	▲	●	■	▲	●
	Ecoperse Tan	T-35132	■	▲	●	■	▲	●	■	▲	●	■	▲	●	■	▲	●
	Ecoperse Red 6	R6L-D94	■	▲	●	■	▲	●	■	▲	●	■	▲	●	■	▲	●
	Ecoperse Blue 1	B1L-39443	■	▲	●	■	▲	●	■	▲	●	■	▲	●	■	▲	●
	Ecoperse Yellow 5	Y5L-69002	■	▲	●	■	▲	●	■	▲	●	■	▲	●	■	▲	●
Natural Octyldodecyl Olivale	please refer to page 7 for Details		■	▲	●	■	▲	●	■	▲	●	■	▲	●	■	▲	●

Usage Guide Statement: The information included in this usage guide is given in good faith and represents our best present state of knowledge but is offered without any guarantee or warranty. It is your responsibility to confirm this information with your regulatory department. *There are no particle size limitations when using Synthetic Mica based pigments.

Sandream Specialties - Complete Product Portfolio

Color Effect	White/Silver	Interference	Color	Color Travel	Dispersion
Mica Based Pearl Series					
Chromatique			√		
DP/TC	√	√	√		
Eldorado			√		
Gemini				√	
Impact	√				
Majestic			√		
Marvel		√	√		
MicaMira				√	
Midnight			√		
Mystic			√		
Optique		√			
Glass Based Pearl Series					
Diamond	√	√	√	√	
Glamour	√	√	√		
GlassMira				√	
Synthetic Fluorhlogopite Based Series					
Fiesta	√	√	√	√	
Sachet	√	√	√		
Smokey			√		
SynMira				√	
Aluminum Based Series					
Alchemique	√		√		
SDI Duo			√		
Silver Coated Glass					
Sterling	√				
Silica Color Variable					
SilikMira				√	
Magni Series					
Magni-Charged Super			√		
Magni-Mira				√	
illumina Series					
illumina			√		
Glitters & Holographic Series					
Spectra	√		√	√	
Confetti	√		√		
Laser Effect Color Variable					
Fantasy	√		√	√	
Bismuth Oxychloride					
Biluna	√				
Bilunasperse	√				
Bichroma			√		
Powders and Fillers					
Powders and Fillers	√		√		
Naturally Dispersed Pigment Series					
Ecoperse					√
Other Pigments					
Carmine			√		
Thermochromatic				√	
Photochromatic				√	
Glow in the Dark			√		
Surface Treated Pearl	√				
Dream Fx Visual Delivery Systems					

April 2021



373 U.S. 46, Building E
Fairfield, NJ
07004, U.S.A.

O +1 973.882.3077
F +1 973.882.3088

www.sandreamspecialties.com
info@sandreamspecialties.com



Scan QR code to
visit our website for more
product information & TDS



**sandream
specialties**
A VIVIFY COMPANY



vivify

COLOR
INGREDIENTS
INNOVATION